

# WELCOME TO BLP PRODUCTS

BLP designs and manufactures high quality performance racing fuel systems, drive components and engine accessory parts. Along with performance Holley® modified carburetors, BLP Billet Xtreme carburetors, gaskets, belt driven fuel pumps, fuel logs and regulators.

We offer one of the largest inventories of Holley® bulk performance carburetor service parts in the industry.

BLP also offers special machining and laser marking services to our customers allowing custom configurations.

Confidentiality to our customers is paramount!

Commitment to quality service and parts is exemplified through continued expansion of our product line, the latest in CNC technology. Our continued development in carburetor and performance product enables BLP to remain a leader in the racing industry.

We are Proud of our long standing status in the industry, our staff, but most of all, in our commitment to service you, our customers.

**Fueling your passion for Xtreme Performance!**

*Joe Hilerio*

President

## **MISSION STATEMENT**

It is the Mission of BLP Racing Products, LLC. To provide racing professionals and enthusiasts with the best American made quality products and knowledge that fulfill their wants and needs at the right price. Our friendly, knowledgeable and professional staff will help inspire, educate and problem-solve for our customers.



## TABLE OF CONTENTS

### BLP COMPLETE CARBURETORS

Billet BX4 Weekend Warrior.....	3
BX Large Bore Billet Main Sections.....	13
BX Large Bore Carburetor.....	8
BXX Billet Xtended 4500 Drag Race Carburetors..	9
BXX Large Bore Stretched Billet Main Sections..	13
BX4 4150 Billet Pro-Flo Series Carburetors.....	3
BX4 Wide Open Throttle	
Switch and Bracket Assembly.....	10
BX4 Xtreme Main Sections.....	12
Bx4 Xtreme 4150 Billet Series Carburetors.....	6
BX45 Billet 4500 Series Main Sections.....	12
BX45 Drag Race Alcohol Applications.....	8
BX45 Drag Race Gas Applications.....	7
BX45 Series Billet Drag Race Carburetors.....	7
Circle Track Alcohol Applications.....	4
Circle Track Gas Applications.....	4
Drag Race Alcohol Applications.....	5-6
Drag Race Alky Applications.....	9
Drag Race Gas Applications.....	4,6-7,9

### BLP CARBURETOR COMPONENTS

Accelerator Pump Arms.....	25
Accelerator Pump Nozzles.....	13
Base Plate Components.....	17
Billet Pro-Flow Base Plate Assemblies.....	16
BLP 4150 Adjustable Secondary Linkage System..	18
BLP 4500 External Linkage Service Parts.....	19
BLP 4500 HP External Linkage System.....	19
BX4 4150 Main Sections.....	11
BX4 4150 Retrofit Kits.....	11
BLP Billet Base Plates (Bare).....	16
BLP Billet Main Sections.....	11

BLP Billet Metering Blocks.....	21
BLP Billet Telescoping Fuel Logs.....	26
BLP Bottom Feed Needle & Seat For Gas.....	23
BLP Overhaul Kits.....	27
BLP Pro-Flow Throttle Shafts.....	18
Booster Stage Stake Tubes.....	15
Bypass Fuel Regulator.....	26
Floats.....	24
Float Bowl Components.....	24
Fuel Filter.....	26
Fuel Inlet Fittings.....	25
Genuine Holley® 4150 HP Series Main Sections..	13
Genuine Holley® 4500 HP Series Main Bodies..	13
Hardware Parts.....	28
Holley® 4150 Boosters.....	13
Holley® Classic Fuel Bowls.....	24
Holley® /BLP Screw, Fasteners & Hardware.....	28
Holley® Hp Bare Base Plates.....	15
Holley® HP Series Metering Blocks.....	20
Holley® Replacement Throttle Shafts.....	18
Intermediate Discharge Tubes.....	15
Lightweight Aluminum Fuel Bowls.....	24
Metering Blocks Components.....	22
Metering Block and Fuel Bowl Gaskets.....	26
Needle and Seat Assemblies.....	23
Needle And Seat Hardware.....	23
Power Valves.....	22
Pump Cams.....	20
Throttle Plates.....	20
Vent Tubes.....	15

## TABLE OF CONTENTS

### BLP JETS

BLP 5500 Air Bleeds	30
BLP 5540 Series	30
BLP XH Series Jets	29
BLP XR Series Jets	29
BLP XL Series Jets	29
XR Series Main Jet Kits	30

### BLP FUEL PUMPS

Complete Kits To Install Belt Drive	
Fuel Pump Include.....	35
External Return Fuel Pumps.....	32
Fuel Bypass Regulator.....	34
Fuel Filters.....	41
Fuel Pressure Gauge.....	34
Fuel Pump Drive Belts.....	41
Fuel Pump Service Parts.....	40
Fuel Pump Size Application.....	34
Fuel Pump Shut Off Valve.....	34
Internal Bypass Fuel Pumps.....	33
Mounting Brackets.....	40
Mounting Spacers.....	41
SBC Internal Bypass Fuel Pump Kits.....	35
Top-Oil For Alcohol.....	35

### BLP ENGINE DRIVE ACCESSORIES

7mm Crankshaft Pulleys.....	50
7mm Poly B-Belts.....	51
Alternator Pulleys.....	50
Balancer Bolts.....	48
Belt Drive Fuel Pump Drive Mandrels.....	47
Complete Drive Kits.....	51
Drive Gears for Dry Sump and Fuel Pump.....	48
Drive Mandrel Kits.....	47

Hex Head Hat Washer	47
Lightweight Poly-V-Engine Accessories	49
Mandrel Spacers	48
Oil Pump Drive Gears	48
Power Steering Pulleys	50
Water Pump Pulleys	50

### BLP ENGINE HARD PARTS

BLP Billet Timing Covers.....	52
Cam Button.....	53
Cam Gear Retainer.....	53
Camshaft Location Adjusting Shim.....	53
Hardware kits.....	53
Piston Oiling System Components.....	53
Timing Pointers.....	53

### BLP FITTINGS/TOOLS

BLP Carburetor Inspection Gauge Kits.....	56
Booster Leveling Tool.....	55
Fuel Shut Off Valve Fitting.....	54
Holley® Fuel Bowl Inlet Plugs.....	54
Holley® Fuel Inlet Fittings.....	54
Jet Tools and Components.....	56
Main Body Thread Repair.....	55
Oil Inlet Filling.....	54
Pin Gauge Sets.....	56
Port Fittings.....	54
Pump Nozzle Screw Repair Kit.....	55
Vertical Mill Booster Tool.....	55

## TERMS

All orders will be shipped C.O.D. or credit card. On C.O.D. shipments UPS will not take cash. You must have a money order or cashiers check made out to BLP Racing Products, INC. for the correct amount. We will accept your company check if you have been pre-approved through our business office, call for information, We accept all cards. Open account status is available with approved credit.

### SHIPPING

All orders are shipped within 48 hours Monday - Friday 8am - 5pm.

We use the following carriers to deliver our orders:

USPS

UPS

DHL International

### PHONE ORDERS: 800-624-1358

All orders will be shipped C.O.D or pre-paid using credit card payment.

Company checks will not be accepted without pre-approval through our business office, call for information.

BLP accepts all major credit cards.

### ON LINE ORDERING

Online orders can be processed on our web site [www.blp.com](http://www.blp.com).

All online orders are processed as quickly as possible, some orders may be delayed if custom items are ordered such as carburetors and fuel pump kits.

You will be contacted via e-mail or direct call should this be the case.

### RETURN MERCHANDISE POLICIES

To initiate the warranty return process, purchaser must return the allegedly defective product to the original place of purchase, along with the dated purchase receipt. BLP can reject a warranty claim if purchaser cannot establish date of purchase. Warranty can be rejected if the consumer cannot establish date of purchase. If purchaser bought a product directly from BLP and (a) BLP shipped the incorrect product, or (b) the purchaser believes product received is defective under BLP's Limited Warranty, please contact our Customer Service Team immediately at 407-422-0394 for complete product return instructions, and to request a Return Goods Authorization (RGA). Final warranty determination is at the sole discretion of BLP.

### WARRANTY

BLP Racing Products, LLC. ("BLP") warrants to the original purchaser only that its new and remanufactured products shall be free from defects in material and workmanship for a period of 90 days from date of purchase, with the exception of certain fuel pumps which are covered by such limited warranty for one year from date of purchase. In the event of a defect in material or workmanship, BLP Racing Products, LLC. . Will, at its option, repair or replace the product, or any defective part or parts thereof, without charge to the original purchaser.

This warranty does not apply to products that have been modified or altered, subjected to misuse, neglect, accident, improper installation or adjustment, dirt or other contaminants, water, corrosion, faulty repair or used in other than those applications recommended in the current BLP Racing Products, LLC. Catalog or on the website. Purchaser's remedies under this Limited Warranty are strictly limited to the repair or replacement of the defective product or parts. BLP shall not be responsible for any actual or alleged labor, transportation, shipping or other incidental charges or actual or alleged consequential or other damages incurred due to an alleged defect under this warranty. In no event shall BLP's maximum liability under this Limited Warranty exceed the original cost of the alleged defective product to the consumer.

This warranty is exclusive and in lieu of all others, oral or written, and express or implied. Any implied warranties, including implied warranties of merchantability and fitness for a specific purpose, are hereby disclaimed. This Limited Warranty supersedes all prior warranty statements.

## WHEN RESULTS COUNT

## BLP COMPLETE CARBURETORS

### BILLET BX4 4150 WEEKEND WARRIOR SERIES CARBURETOR

**ALL NEW!** BX4 Billet Weekend Warrior carburetors are designed for the value minded street/strip enthusiast who appreciates quality.

Using only "American Made" 6061 material, these lightweight carburetors provide excellent acceleration and throttle response.

This off the shelf unit provides BLP Quality in a bolt on affordable price.

*(Please note for custom applications look at our BX4 Pro-Flo series carburetors)*

#### FEATURES:

- Utilized for street low horsepower applications.
- B Style Stepped Down leg boosters.
- BLP BX4 Lightweight all billet construction main body.
- Lightweight Aluminum float bowls.
- BLP Fixed Emulsion Calibrated Billet Metering Blocks.
- Adjustable Air Bleeds, relocated for increased air flow.
- BLP adjustable throttle linkage
- Stainless Steel throttle plate screws
- BLP Secondary Cam Bracket with adjustable idle screw.
- BLP Billet Base Plate.



Part Number	Venturi	Throttle Bore
4016-BX4-DL-G-650	1.300	1.6875
4016-BX4-DL-G-750	1.405	1.6785

### BX4 4150 BILLET PRO-FLO SERIES CARBURETORS

BLP BX4 Billet PRO-FLO series carburetors are specifically designed for function and performance.

The BX4 Billet PRO-FLO carburetors can be custom designed and calibrated to provide optimum performance for your application.

Calibrations designed for your individual race needs.

Available in gas, Alcohol and E85 for applications such as Circle Track, Drag, Road Race, Truck Pull, Mud Bogs.

#### FEATURES:

- BLP Billet base plate
- BLP secondary adjustable linkage
- Vibratory polished
- Replaceable air correctors
- Calibrated boosters
- BLP main jets
- Available in Black Bright Anodize coating
- BLP billet metering blocks
- Racing Floats
- Adjustable emulsion system
- Titanium needles and seats in all alcohol carburetors
- Thinned, welded and electrolysis nickel plated throttle shafts
- Jet Tuning kit included



*Shown in Black (Optional)*

## BLP COMPLETE CARBURETORS

### CIRCLE TRACK GAS APPLICATIONS

Part Number	Venturi	Body	Throttle Bore	Booster	Notes
4014-BX4-DL-G-C	1.300	650	1.6875	DL	Available 1.250-1.300-1.325-1.350 Venturi
4014C-BX4-DL-G-C	1.300	650	1.6875	DL	Black Coated
4014-BX4-DL-G-C602	1.250	650	1.6875	DL	602 Crate Applications
4014-BX4-DL-G-C604	1.250	650	1.6875	DL	604 Crate Applications
4019-BX4-DL-G-C	1.375	750	1.6875	DL	For gaugle legal applications
4022-BX4-DL-G-C	1.405	750	1.6875	DL	Available 1.375-1.405-1.420-1.450 Venturi
4022C-BX4-DL-G-C	1.405	750	1.6875	DL	Black Coated
4024-BX4-DL-G-C	1.405	950	1.750	DL	Available 1.375-1.405-1.420-1.450 Venturi
4024C-BX4-DL-G-C	1.405	950	1.750	DL	Black Coated
4036-BX4-DL-G-C	1.590	1000	1.750	DL	Available 1.560-1.575-1.590-1.610
4036C-BX4-DL-G-C	1.590	1000	1.750	DL	Black Coated
4036-BX4-A-G-C	1.590	1000	1.750	Annular	Available 1.560-1.575-1.590-1.610
4036C-BX4-A-G-C	1.590	1000	1.750	Annular	Black Coated

### CIRCLE TRACK ALCOHOL APPLICATIONS (Black Coated)

Part Number	Venturi	Body	Throttle Bore	Booster	Notes
4023C-BX4-DL-M-C604	1.250	650	1.6875	DL	604 Crate Applications
4023C-BX4-DL-M-C	1.405	750	1.6875	DL	Available 1.405-1.420-1.450 Venturi
4025C-BX4-DL-M-C	1.405	950	1.750	DL	Available 1.405-1.420-1.450 Venturi
4037C-BX4-DL-M-C	1.590	1000	1.750	DL	Available 1.560-1.575-1.590-1.610
4037C-BX4-A-M-C	1.590	1000	1.750	Annular	Available 1.560-1.575-1.590-1.610

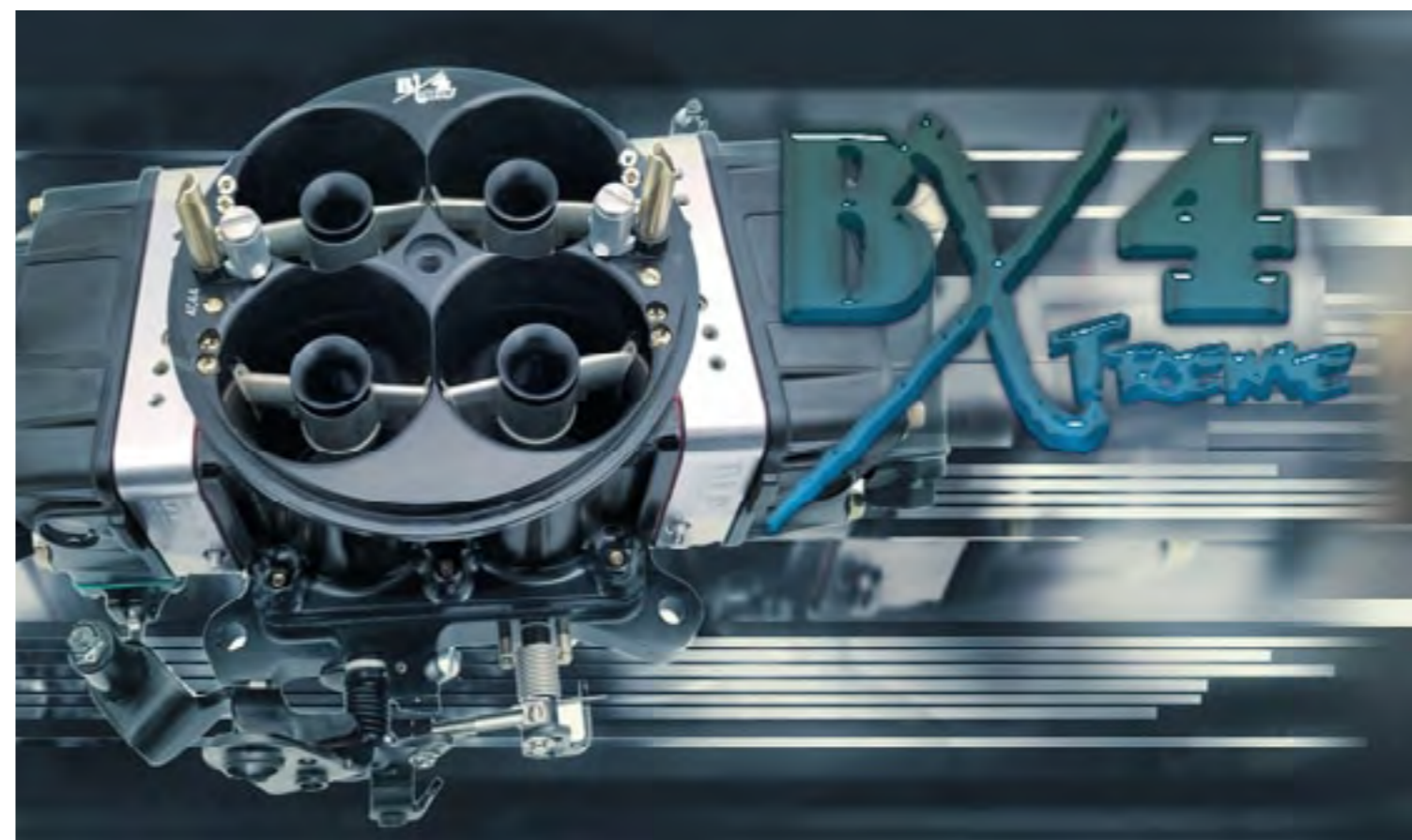
### DRAG RACE GAS APPLICATIONS

Part Number	Venturi	Body	Throttle Bore	Booster	Notes
4014-BX4-DL-G-D	1.300	650	1.6875	DL	Available 1.250-1.300-1.325-1.350 Venturi
4014C-BX4-DL-G-D	1.300	650	1.6875	DL	Black Coated
4022-BX4-DL-G-D	1.405	750	1.6875	DL	Available 1.375-1.405-1.420-1.450 Venturi
4022C-BX4-DL-G-D	1.405	750	1.6875	DL	Black Coated
4024-BX4-DL-G-D	1.405	950	1.750	DL	Available 1.375-1.405-1.420-1.450 Venturi
4024C-BX4-DL-G-D	1.405	950	1.750	DL	Black Coated
4036-BX4-DL-G-D	1.590	1000	1.750	DL	Available 1.560-1.575-1.590-1.610
4036C-BX4-DL-G-D	1.590	1000	1.750	DL	Black Coated
4036-BX4-A-G-D	1.590	1000	1.750	Annular	Available 1.560-1.575-1.590-1.610
4036C-BX4-A-G-D	1.590	1000	1.750	Annular	Black Coated

## BLP COMPLETE CARBURETORS

### DRAG RACE ALCOHOL APPLICATIONS (Black Coated)

Part Number	Venturi	Body	Throttle Bore	Booster	Notes
4015C-BX4-DL-M-D	1.300	650	1.6875	DL	Available 1.300-1.325-1.350 Venturi
4023C-BX4-DL-M-D	1.405	750	1.6875	DL	Available 1.375-1.405-1.420 Venturi
4025C-BX4-DL-M-D	1.405	950	1.750	DL	Available 1.375-1.405-1.420-1.450 Venturi
4037C-BX4-DL-M-D	1.590	1000	1.750	DL	Available 1.560-1.575-1.590-1.610 Venturi
4037C-BX4-A-M-D	1.590	1000	1.750	Annular	Available 1.560-1.575-1.590-1.610 Venturi



### BLP Original Billet Xtreme Series Carburetors:

The Billet Xtreme Series carburetors use only the finest in USA grade materials and are manufactured in our Orlando FL facility. Custom Venturi sizes available.

**Please speak with your sales representative for available options.**

**Several versions are available to our customers to meet their respective needs:**

- BX4 4150 Design available in 2 or 3-circuit designs up to 1.610 x 1.750 sizing.
- BX4 Xtreme 4150 Large bore 4150 available in 2 or 3 circuit design up to 1.950 x 2.200 sizing.
- BX45 4500 Series available in 2 or 3 circuit up to 2.375 throttle bore.
- BX Large bore 4500 series available up to 2.800 throttle bores.
- BXX Large Spread bore design available up to 2.800 throttle bores.

## BLP COMPLETE CARBURETORS

### BX4 XTREME 4150 BILLET SERIES CARBURETORS

BLP BX4 Billet Xtreme series carburetors are specifically designed for high flow in a small foot print. This unique design uses the foot print of a standard 4150 carburetor with the air flow and performance of a 4500 series carburetor.

Available to use on a 4150 or 4500 intake (restrictions may apply.)

Available in gas, Alcohol and E85 for applications.

These CNC machined main sections are designed for the best combination of air flow and throttle response.

#### FEATURES:

**BLP Billet base plate. (Dual pattern.)**

- **BLP secondary adjustable linkage**
- **Vibratory polished**
- **Replaceable air correctors**
- **Calibrated boosters**
- **BLP main jets**
- **Available in Black Bright dip Anodize coating**
- **BLP Billet metering blocks**
- **Racing Floats**
- **Adjustable emulsion system**
- **Titanium needles and seats in all alcohol carburetors**
- **Thinned, welded and electrolysis nickel plated throttle shafts**
- **Jet Tuning kit included**



#### Drag Race Gas Applications

Part Number	Venturi	Body	Throttle Bore	Booster	Notes
4044-BX4X-A-G-D-1050	1.720	1050	2.000	Annular	Available 1.720-1.750 Venturi
4044C-BX4X-A-G-D-1050	1.720	1050	2.000	Annular	Black Coated
4044-BX4X-A-G-D-1150	1.820	1150	2.000	Annular	Available 1.820- 1.850 Venturi
4044C-BX4X-A-G-D-1150	1.820	1150	2.000	Annular	Black Coated
4044-BX4X-A-G-D-1250	1.890	1250	2.125	Annular	Available 1.890 Venturi
4044C-BX4X-A-G-D-1250	1.890	1250	2.125	Annular	Black Coated
4044-BX4X-A-G-D-1350	1.920	1350	2.200	Annular	Available in 1.910-1.920-1.950 Venturi
4044C-BX4X-A-G-D-1350	1.920	1350	2.200	Annular	Black Coated

### BLP PRO-FLO HOLLEY® 4500 MODIFIED DRAG RACE CARBURETORS

These Holley® modified BLP calibrated performance carburetors have the best of Genuine Holley® parts along with the performance calibrations provided by BLP.

#### With many features:

- **Billet BLP calibrated metering blocks**
- **BLP external linkage assemblies**
- **BLP Billet booster inserts**



## BLP COMPLETE CARBURETORS

#### Drag Race Gas Applications

Part Number	Venturi	Body	Throttle Bore	Booster	Notes
4044-H-A-G-D-1050	1.720	1050	2.000	Annular	Available in 1.720 - 1.750 Venturi
4044-H-A-G-D-1150	1.820	1150	2.000	Annular	Available in 1.820 - 1.850 Venturi
4044-H-A-G-D-1250	1.890	1250	2.125	Annular	Available 1.890 Venturi
4044-H-A-G-D-1350	1.920	1350	2.200	Annular	Available in 1.910-1.920-1.950 Venturi

#### Drag Race Alcohol Applications

Part Number	Venturi	Body	Throttle Bore	Booster	Notes
4045-H-A-M-D-1050	1.720	1050	2.000	Annular	Available in 1.720 - 1.750 Venturi
4045-H-A-M-D-1150	1.820	1150	2.000	Annular	Available in 1.820 - 1.850 Venturi
4045-H-A-M-D-1250	1.890	1250	2.125	Annular	Available 1.890 Venturi
4045-H-A-M-D-1350	1.950	1350	2.200	Annular	Available in 1.910-1.920-1.950 Venturi

### BLP BX45 SERIES BILLET DRAG RACE CARBURETORS

BLP's All New Billet series carburetors offer made in USA quality with the ability to have throttle bores up to 2.375".

Lightweight construction and quality you have come to expect from BLP.

Shiny Finish listed for black coated applications add C to prefix

i.e. 4044C-BX45- XX-XX-X.



#### FEATURES:

- **BLP Billet BLP calibrated metering blocks**
- **BLP External Linkage**
- **BLP Billet Booster Inserts**
- **Billet BX45 Main Section**
- **BLP External Linkage System**

#### BX45 Drag Race Gas Applications

Part Number	Venturi	Body	Throttle Bore	Booster	Notes
4044-BX45-A-G-D-1050	1.720	1050	2.000	Annular	Available in 1.720 - 1.750 Venturi
4044C-BX45-A-G-D-1050	1.720	1050	2.000	Annular	Black Coated
4044-BX45-A-G-D-1150	1.820	1150	2.000	Annular	Available in 1.820 - 1.850 Venturi
4044C-BX45-A-G-D-1150	1.820	1150	2.000	Annular	Black Coated
4044-BX45-A-G-D-1250	1.890	1250	2.125	Annular	Available 1.890 Venturi
4044C-BX45-A-G-D-1250	1.890	1250	2.125	Annular	Black Coated
4044-BX45-A-G-D-1350	1.950	1350	2.200	Annular	Available in 1.910-1.920-1.950 Venturi
4044C-BX45-A-G-D-1350	1.950	1350	2.200	Annular	Black Coated

## BLP COMPLETE CARBURETORS

BX45 Drag Race Alcohol Applications					
Part Number	Venturi	Body	Throttle Bore	Booster	Notes
4045C-BX45-A-M-D-1050	1.720	1050	2.000	Annular	Available in 1.720 - 1.750 Venturi Black Coated
4045C-BX45-A-M-D-1150	1.820	1150	2.000	Annular	Available in 1.820 - 1.850 Venturi Black Coated
4045C-BX45-A-M-D-1250	1.890	1250	2.125	Annular	Available 1.890 Venturi Black Coated
4045C-BX45-A-M-D-1350	1.950	1350	2.200	Annular	Available in 1.910-1.920-1.950 Venturi Black Coated

Carburetors are Dry Air Flow tested at 20.4" on a SuperFlow SF-1200 FlowCom flow bench using a 2" open hole spacer.

### Example: 4044C-BX-DL-M-D

Part #	4044C	BX	DL	M	D
		Type Codes	Booster Type	Fuel Code	Application
Starting with 40 = Carb Ending with C = Coated		Z = Zinc H = HP BX4 = Billet 4150 BX4X = Billet Xtreme 4150 BX45 = Billet 4500 BX = Billet Large Bore 4500 BXX = Extd Billet Large Bore 4500	A = Annular DL = Downleg S = Straight	M = Methanol G = Gas E = E85 P = Pump O = Oxygenated	TR = Tunnel Ram D = Drag C = Circle Track R = Road Race M = Marine P = Pulling S = Street SC = Super Chg

### BLP (BX) BILLET XTREME 4500 DRAG RACE CARBURETORS

BLP (BX) Billet Xtreme 4500 series carburetors are specifically designed for high flow larger cubic inch applications:

This unique design allows for flow numbers as high as 2500cfm and throttle bores as large as 2.800" Uses standard Holley® 4500 bolt pattern Available in gas, Alcohol and E85 applications. These CNC machined main sections are designed for the best combination of air flow and throttle response.



#### Features:

- Uses standard Holley® 4500 series bolt pattern.
- BLP shaft and linkage kits.
- Vibratory polished
- Replaceable air correctors
- Calibrated boosters
- BLP main jets
- Available in Black Anodize coating.
- BLP billet metering blocks
- Available throttle bores up to 2.800" (2200cfm)
- Adjustable emulsion system
- Titanium needles and seats in all alcohol carburetors
- Jet Tuning kit included

## BLP COMPLETE CARBURETORS

Drag Race Gas Applications:					
Part Number	Venturi	Body	Throttle Bore	Booster	Notes
4044-BX-A-G-D	Specify	Billet	Specify	Annular	Smallest size available 1.890 x 2.300
4044C-BX-A-G-D	Specify	Billet	Specify	Annular	Black Coated

### Drag Race Alky Applications:

Part Number	Venturi	Body	Throttle Bore	Booster	Notes
4045C-BX-A-M-D	Specify	1050	Specify	Annular	Smallest size available 1.890 x 2.300
4045C-BX-A-M-D	Specify	Billet	Specify	Annular	Black Coated

### BLP (BXX) BILLET XTREME XTENDED 4500 DRAG RACE CARBURETOR

BLP (BXX) Billet Xtreme Xtended 4500 series carburetors are specifically designed for high flow Larger cubic inch applications: Unique spreadbore pattern designed for best dispersion using tunnel ram and box style intakes. Available in gas, Alcohol and E85 applications. These CNC machined main sections are designed for the best combination of air flow and throttle response.



#### Features:

- Xtended spread bore pattern for tunnel ram and box style intakes.
- BLP shaft and linkage kits.
- Vibratory polished
- Replaceable air correctors
- Calibrated boosters
- BLP main jets
- Available in Black Anodize coating.
- BLP billet metering blocks
- Available throttle bores up to 2.800" (2500cfm)
- Adjustable emulsion system
- Titanium needles and seats in all alcohol carburetors
- Jet Tuning kit included

Drag Race Gas Applications:					
Part Number	Venturi	Body	Throttle Bore	Booster	Notes
4044-BXX-A-G-D	Specify	Billet	Specify	Annular	Smallest size available 1.890 x 2.300
4044C-BXX-A-G-D	Specify	Billet	Specify	Annular	Black Coated

### Drag Race Alky Applications:

Part Number	Venturi	Body	Throttle Bore	Booster	Notes
4045C-BXX-A-M-D	Specify	Billet	Specify	Annular	Smallest size available 1.890 x 2.300
4045C-BXX-A-M-D	Specify	Billet	Specify	Annular	Black Coated

## BLP COMPLETE CARBURETORS



8201BX4X BX4 XTREME 5-5/8 AIR CLEANER BASE



8203BX4X Adapter Ring



8202BX4X Sure Seal BX4 Xtreme seal  
8202BX4X-2 Sure Seal BX4 Xtreme seal O-ring

Add on components	
<b>BX4 Wide open throttle switch and bracket assembly</b>	
<b>8200BX4</b>	For all BLP BX4 Billet and Holley® 4150 applications.
<b>8200BX4-1</b>	Wide open throttle switch bracket only
<b>8200BX4-2</b>	Nitrous switch only
<b>8200BX4-3</b>	Nitrous Switch bracket screws
<b>8200BX4-4</b>	Nitrous switch bracket screws (Body)
<b>8200BX4-5</b>	Nitrous switch Mount nylock nuts
<b>8200BX4-6</b>	Nitrous switch Mount flat washers
<b>8200BX4X</b>	Wide open throttle switch assembly for BX4 Xtreme Carburetors
<b>8200BX4X-1</b>	Wide open throttle switch bracket only BX4X
<b>8200BX45-TPS</b>	Throttle position sensor block off plug Only
<b>8200BX45-NOS</b>	Throttle position sensor block off plug/ NOS switch bracket
<b>8200BX45-3</b>	Nitrous switch screws
<b>8200BX45-4</b>	Nitrous switch bracket screw (Body)
<b>8200BX45-4A</b>	Nitrous switch bracket screw (Body) Drilled
<b>8201BX4X</b>	5-5/8" Air Cleaner Base flat for BX4 Xtreme
<b>8201BX4XD</b>	5-5/8" Air Cleaner drop base for BX4 Xtreme
<b>8202BX4X</b>	Sure Seal BX4 Xtreme seal
<b>8202BX4X-2</b>	Sure Seal BX4 Xtreme seal O-ring

## BLP CARBURETORS COMPONENTS

### BLP BILLET MAIN SECTIONS

These lightweight all billet components are a great choice in retrofitting your existing or building your own custom application. Manufactured in our Orlando FL facility using only the quality domestic materials ensuring the finest in quality products for our customers.

**With features such as:**

- Custom Venturi design for strong signal and increased air flow.
- Adjustable air bleed locations relocated for increased air flow.
- Available to 2 or 3-circuit applications
- Custom sizing available. Speak to your sales representative for available options.
- Black anodize coating available
- Slight modifications needed to install Genuine Holley® boosters



### BX4 4150 MAIN SECTIONS

Part Number	Size	Venturi	Throttle Bore	Application
<b>5251BX4-650</b>	650	1.250 - 1.300 - 1.325 - 1.350	1.688	Bare
<b>5251CBX4-650</b>	650	1.250 - 1.300 - 1.325 - 1.350	1.688	Bare, Coated
<b>5251BX4-750</b>	750	1.375 - 1.405 - 1.420	1.688	Bare
<b>5251CBX4-750</b>	750	1.375 - 1.405 - 1.420	1.688	Bare, Coated
<b>5251BX4-950</b>	950	1.375 - 1.405 - 1.420 - 1.450 - 1.500	1.750	Bare
<b>5251CBX4-950</b>	950	1.375 - 1.405 - 1.420 - 1.450 - 1.500	1.750	Bare, Coated
<b>5251BX4-850</b>	850	1.590 - 1.610 - 1.630	1.750	Bare
<b>5251BX4-850</b>	850	1.590 - 1.610 - 1.630	1.750	Bare, Coated

### BX4 4150 RETROFIT KITS

These 650-750 and 850 complete lightweight Billet BX4 main sections are a great addition to your 4150 series carburetor. Just bolt on and run.

**Bodies complete with:**

- BLP calibrated Boosters installed
- Stepped Boosters Installed.
- Air correctors.
- Squirters.
- Stainless steel squirter screws.
- Vent tubes.
- Base gasket



Assembly list					
Part Number		Size	Venturi	Throttle Bore	Application
<b>5251BX4-650RK</b>	034 High speed .062 Idle.	650	1.250	1.688	Assembled
<b>5251BX4-750RK</b>	031 High speed .062 Idle.	750	1.375	1.688	Assembled
<b>5251BX4-850RK</b>	031 High speed .056 Idle	850	1.590	1.750	Assembled

**Please Note\*\*** This application uses only BLP 5500 air bleeds. Custom applications available, please call our sales representatives for more details.

## BLP CARBURETORS COMPONENTS

Part Number	Size	Venturi	Throttle Bore	Application
<b>5251BX4-650RK</b>	650	1.250 - 1.300 - 1.325 - 1.350	1.688	Assembly boosters installed
<b>5251CBX4-650RK</b>	650	1.250 - 1.300 - 1.325 - 1.350	1.688	Assembly boosters installed, Coated
<b>5251BX4-750RK</b>	750	1.375 - 1.405 - 1.420	1.688	Assembly boosters installed
<b>5251CBX4-750RK</b>	750	1.375 - 1.405 - 1.420	1.688	Assembly boosters installed, Coated
<b>5251BX4-950RK</b>	950	1.375 - 1.405 - 1.420 - 1.450 - 1.500	1.750	Assembly boosters installed
<b>5251CBX4-950RK</b>	950	1.375 - 1.405 - 1.420 - 1.450 - 1.500	1.750	Assembly boosters installed, Coated
<b>5251BX4-850RK</b>	850	1.590 - 1.610 - 1.630	1.750	Assembly boosters installed



### BX4 XTREME MAIN SECTIONS

The all-new BX4 Xtreme series is the ultimate 4150. This unique design is a large bore high flow application, all in a 4150 footprint.

The ability to house throttle bores up to 2.200" creates large flow numbers up to 1600cfm in a small foot-print. Uses a 5-5/8" (Air cleaner seal 8201BX4X Air cleaner base).



### BX45 BILLET 4500 SERIES MAIN SECTIONS

All New BX45 Billet 4500 series main bodies are the finest in all billet USA manufactured main bodies. Designed to provide the highest degree of quality and function, the BX45 uses all standard 4500 series components. Also is available with TPS provision that also doubles as a wide open switch bracket, for use with nitrous. With the ability to use throttle bores up to 2.375, the BX45 provides a wide range of uses and is a practical retrofit application.

Sizes utilized				
Part Number	Size	Venturi	Throttle Bore	Application
<b>5251BX4X-1050</b>	1050	1.720	2.000	Bare
<b>5251CBX4X-1050</b>	1050	1.720	2.000	Bare Coated
<b>5251BX4X-1150</b>	1150	1.820	2.000	Bare
<b>5251CBX4X-1150</b>	1150	1.820	2.000	Bare Coated
<b>5251BX4X-1250</b>	1250	1.890	2.125	Bare
<b>5251CBX4X-1250</b>	1250	1.890	2.125	Bare Coated
<b>5251BX4X-1350</b>	1350	1.920	2.200	Bare
<b>5251CBX4X-1350</b>	1350	1.920	2.200	Bare Coated
<b>5251BX4X-1350+</b>	1350+	1.950	2.200	Bare
<b>5251CBX4X-1350+</b>	1350+	1.950	2.200	Bare Coated

Part Number	Size	Venturi	Throttle Bore	Application
<b>5251BX45-1050</b>	1050	1.720 - 1.750	2.000	Bare
<b>5251CBX45-1050</b>	1050	1.720 - 1.750	2.000	Bare Coated
<b>5251BX45-1150</b>	1150	1.820 - 1.850	2.000	Bare
<b>5251CBX45-1150</b>	1150	1.820 - 1.850	2.000	Bare Coated
<b>5251BX45-1250</b>	1250	1.890 - 1.910	2.125	Bare
<b>5251CBX45-1250</b>	1250	1.890 - 1.910	2.125	Bare Coated
<b>5251BX45-1350</b>	1350	1.920	2.200	Bare
<b>5251CBX45-1350</b>	1350	1.920	2.200	Bare Coated
<b>5251BX45-1350+</b>	1350+	1.950	2.200	Bare
<b>5251CBX45-1350+</b>	1350+	1.950	2.200	Bare Coated

## BLP CARBURETORS COMPONENTS

### BX LARGE BORE BILLET MAIN SECTIONS

BX Large bore billet main sections are a great option for building large bore carburetor applications, with flow values up to 2500cfm all using a standard 4500 series bolt pattern.

Manufactured from the finest in quality domestic materials in our Orlando FL facility allows throttle bores up to 2.800."

Part No.	Size	Venturi	Throttle Bore	Application
<b>5251BX</b>	Custom	Custom	Up to 2.800"	Bare
<b>5251CBX</b>	Custom	Custom	Up to 2.800"	Bare Coated

### BXX LARGE BORE STRETCHED BILLET MAIN SECTIONS

BXX Billet Large Spread Bore Main Sections are a great option for building large bore carburetor applications with flow values up to 2500 CFM. These quality made in USA main section use only the finest in USA 6061 material. This unique design allows for throttle bore up to 2.800".

Part No.	Size	Venturi	Throttle Bore	Application
<b>5251BXX</b>	Custom	Custom	Up to 2.800	Bare
<b>5251CBXX</b>	Custom	Custom	Up to 2.800	Bare Coated

### GENUINE HOLLEY® 4150 HP SERIES MAIN SECTIONS

Part Number	Application
<b>63426S</b>	0-4412S Aluminum
<b>67887-2S</b>	650 CFM 0-80812BKX Aluminum



### GENUINE HOLLEY® RETROFIT KIT

This retrofit main body kit converts 0-4777S (650 CFM), 0-4778S (700 CFM), and 0-4779S (750 CFM) carburetors to a 750 CFM HP main body for increased horsepower, torque & airflow.

#### Features:

- **All Necessary Parts are included**
- **Simple Installation with common hand tools**
- **Pre-Calibrated at the factory for Optimum Performance**
- **and Drivability on a wide variety of applications**
- **Reduces Turbulence and Smooths Air Entry into the Venturi**
- **Eliminates Choke Tower and associated hardware of standard**
- **Holley® Double Pumper®**
- **Eligible for Holley® Contingency Programs**

Part Number	Application
<b>134-300S</b>	Holley® For HP double pumper

### GENUINE HOLLEY® 4500HP SERIES MAIN BODIES

Part Number	Size	Venturi	Throttle Bore
<b>1211259-4</b>	1050	1.688	2.000
<b>1211259-2</b>	1150	1.810	2.000
<b>1211259-1</b>	1250	1.880	2.125



### ACCELERATOR PUMP NOZZLES

21572-Size					
014	018	021	025	028	031
032	.037	.042	.045	.047	.050
.055	.060				



### HOLLEY® 4150 BOOSTERS

Part Number	Description
<b>45312</b>	Straight leg .125 pilot hole
<b>45146</b>	Down-leg .140"
<b>45206</b>	Down-leg .152"
<b>45165</b>	Down-leg .178"
<b>45296</b>	Down-leg stepped .156





**B-STYLE BOOSTERS**

These stepped boosters are designed for improved distribution, torque over stock applications.

145-200-Size						
.136	.140	.155	.160	.166	.180	.190



**BLP MODIFIED DOWN-LEG BOOSTERS**

BLP 4150 down-leg boosters are machined from heavy duty blank castings. The booster legs are sized accordingly using special ball nose reamers to ensure better fuel delivery. The modified boosters utilize a custom machined radius in the center as well the outside is machined for uniformity and better air flow characteristics.

Part Number	Application
<b>5101-Size</b>	Legal style boosters no modifications effecting rules applications
	.140 .145 .150 .155 .160
	.166 .170 .180 .190
<b>5100-Size</b>	Modified boosters no step
	.140 .145 .150 .155 .160
	.166 .170 .180 .190
<b>5100S-435-Size</b>	Modified, stepped boosters .435 x .500 recommended for 830 & Larger
	.140 .145 .150 .155 .160
	.166 .170 .180 .190
<b>5100S-450-Size</b>	Modified stepped boosters .450 x .510 recommended for up to 830 carbs
	.140 .145 .150 .155 .160
	.166 .170 .180 .190

**BLP CARBURETORS COMPONENTS**



**BLP ANNULAR BOOSTER BANJOS**

The all new annular booster banjos are made of 100% aluminum vs standard zinc style castings. This updated design and material will require a few small changes to the installation process to ensure proper fit and finish.

Part Number
45260



**HOLLEY® 4500 BOOSTER COMPONENTS**

Part Number	Description
21890	HP Annular booster banjo
21891	HP Annular skirted booster banjo



**BLP MODIFIED 4500 SKIRTED BANJOS**

These 4500 series boosters are machined on the O.D. to accommodate the carburetor builders respective needs.

5116-Size						
.920	.930	.940	.950	.960	.970	
.980	.990	1.000	1.010	1.020	1.030	
1.040	1.050	1.060	1.070	1.080	1.090	
1.100	1.120					

**BLP CARBURETORS COMPONENTS**



**BLP BILLET ANNULAR BOOSTER INSERTS**

All BLP billet booster inserts available in Black anodized finish with 8-12 or 16 hole configurations. Custom configurations available. Please speak to your sales representative.

Part Number.	Application
5104	.500 I.D. Tapered bottom
51041	.500 I.D. Tapered bottom Tapered channel New!
5105	.600 I.D. Tapered bottom
51051	.600 I.D. Tapered bottom Tapered channel New!
5108	.500 I.D. Tapered bottom Alky



**BOOSTER STAKE TUBES**

Part Number	Application
141291	.160" Hole
141291-125	.125" Pilot hole
141291BX4X-Size	Bx4 Xtreme 160 hold
141291-200	.200 Hole requires slight modification to install due to larger O.D.
141291BX-Size	For all BX applicatons



**INTERMEDIATE DISCHARGE TUBES**

Part Number	Application
14797	.850" long commonly used in 4500 series 3-circuit applications
14797-1	.750" long commonly used in 4150 series 3-circuit applications



**VENT TUBES**

Part Number	Application
4858-1.400	1.400" Brass flat end
4858-1.750	1.750" Brass flat end
4858-2.125	2.125" Brass flat end
48581	Steel J-Tube marine design.
48582-1.500	BLP side exit vent tube designed to reduce the effect the air cleaner lid has on bowl pressure.



**HOLLEY® HP BARE BASE PLATES**

Part number	Application
1211416	500HP
1211195-2	650-750HP
1211196	850-50-1000HP



**HOLLEY® BASE PLATE ASSEMBLIES**

Genuine Holley® base plate assemblies to fit any 2300 and 4150 series carburetors. (Pump arm not included)

Part Number	Application
41211-500	500 CFM HP 0-80583-1
41211-650	650 CFM HP 80541-1
41211-750	750 CFM HP 0-80528-1
41211-850	850 CFM HP 0-80513-1

## BLP CARBURETORS COMPONENTS

### BILLET RETROFIT BASE PLATE ASSEMBLIES

These fully assembled applications utilize stock shafts and components to be a great feature to retrofit an Holley® or BLP application.

Part Number	Application
52002-750B	650-750 Carb single bolt pattern
52002-850B	850-1000 Carb dual bolt pattern



BLP offers a unique .700" thick 4-hole spacer that increases the distance of the main body from the throttle shafts, thus providing better throttle response and gains of up to 4ft lbs. of torque have been found when utilizing this spacer. It is designed to work with all BLP 4150 billet base plates and stock Holley® cast 4150 applications.

**Kit contains:**

- (6) BLP 55671 Extended base to body screws
- (2) BLP 5205 pump housing levers (Used with 50cc covers)

Part Number	Application
52021-750B	1-11/16" Billet base plate spacer kit
52021-850B	1-3/4" Billet base plate spacer kit
5202-750B	750 (1-11/16) Spacer only
5202-850B	850 (1-3/4) Spacer only
55671	Base plate to main body screws (6) required
5205	Spacer kit hardware components Contains: 6 screws, 2 springs, 2 pump levers
52051	pump housing levers



### BLP BILLET BASE PLATES (BARE)

BLP Billet base plates are available as a retrofit for any Holley® 4150 650-1000cfm applications.

**Design features:**

- Anodized for corrosion resistance
- Added strength
- Good 4-corner idle quality
- Boss at rear for vacuum fitting
- Dual secondary spring pins for tension selection

Part Number	Application
5200-750B	750 CFM billet single bolt pattern (Black)
5300-850B	850 CFM billet dual bolt pattern (Black)



### BILLET PRO-FLOW BASE PLATE ASSEMBLIES

**Design Features:**

- Thinned, welded and Nickel plated throttle shafts.
- Stainless Torx throttle plate screws.
- BLP adjustable secondary linkage.
- BLP adjustable secondary cam bracket.
- Stainless throttle plates.
- Anodized for corrosion resistance.

Part Number	Application
52001-750B	650-750 carb, single bolt pattern
53001-850B	850-1000 carb, dual bolt pattern

## BLP CARBURETORS COMPONENTS

Base Plate Components	
Part Number	Description
5635	Genuine Holley® 4150 Throttle plate screw
56351	BLP 1/8" Stainless Torx Throttle plate screw
56352	BLP 3/16" Stainless Torx Throttle plate screw
56353	BLP 1/4" Stainless Torx Throttle plate screw
51260	Genuine Holley® 4500 Throttle plate screw
51271	4150 Throttle adjustment screw
5372	4500 Throttle adjustment screw
51601	4150 Sec throttle adjustment screw
51601-1	BLP 4150 Sec throttle adjustment screw for billet base plate
5584	Secondary cam bracket screw
5567	Base plate main body screw
55671	BLP Base plate main body screw for 5202 spacers
291094	Sec return spring pin
291094-BLP	Sec return spring pin for BLP billet base plates
37133	Acc pump arm pivot
371331	BLP acc pump arm pivot washer for BLP billet base
4744	Pump arm retainer clip
38110	Throttle adjustment spring for 4150
381101	Throttle adjustment spring (25% stonger)
381559	Throttle adjustment spring for 4500 series
381792	Sec throttle return spring for 4150 Progressive applications.
43601	Progressive secondary link (Blue)
43601-1	1: Secondary link (Gold)
43601B-BLP	BLP adjustable secondary link
46395-.010	Secondary throttle link washer .010
46395-.020	Secondary throttle link washer .020
46395-.031	Secondary throttle link washer .031
46395-.040	Secondary throttle link washer .040

Base Plate Components	
Part Number	Description
46395-.050	Secondary throttle link washer .050
46395-.060	Secondary throttle link washer .060
48183	Secondary throttle link cotter pin (Brass)
48183SS	Secondary throttle link cotter pin (Stainless)
5304	4 Corner idle passage plug (Aluminum)
5306	Plug, brass carburetor choke rod hole.
5307	Pin, metering block to locate gasket.
5312	Plug, acc pump passage plug for Billet blk
5313	Plug, acc pump passage Holley® M/B.
14486	Vacuum tube 3/8"
14521	Vacuum tube 3/16"
7550	Rubber vacuum plug 3/16"
7550-3	Rubber vacuum plug 1/4"
7558	Rubber vacuum plug 3/8"
63822	Secondary accelerator pump cam bracket
638221	BLP Secondary accelerator pump bracket (Complete)
638221-1	BLP Secondary accelerator pump cam bracket (w/o stop lever)
638221-2	BLP Secondary accelerator pump cam bracket (w/o stop lever)
638221-3	Throttle stop lever only.



## BLP CARBURETORS COMPONENTS



### HOLLEY® REPLACEMENT THROTTLE SHAFTS

BLP offers a full line of Genuine Holley® throttle shafts for the 2300-4150 & 4500 applications.

Part Number	Application
102264-3	Primary shaft Progressive linkage
102203	Secondary shaft Progressive linkage
103497	Primary shaft Progressive linkage (No bushing relief)
103499	Secondary shaft Progressive linkage (No Bushing relief)



### BLP PRO-FLOW THROTTLE SHAFTS

BLP Pro-Flow Throttle Shafts for the 2300-4150 series applications, are thinned for optimum air flow.

The arm is welded for strength, which the assembly is electrolysis nickel plated for corrosion resistance and visual appeal. (Includes BLP throttle plate stainless screws.)



Part Number	Application
102264-35	Primary Thinned throttle shaft.
102264-351	Primary gage legal dimensions
102203-5	Secondary Thinned throttle shaft
102203-51	Secondary gage legal dimensions
49352-25-2.125	Primary 4500 External linkage shaft 2.125
49352-26-2.125	Secondary 4500 External linkage shaft 2.125
49352-25-2.200	Primary 4500 External linkage shaft 2.200
49352-26-2.200	Secondary 4500 External linkage shaft 2.200
103497-BX4X-2.000	Primary BX4 Xtreme throttle shaft 2.000
103499-BX4X-2.000	Secondary BX4 Xtreme throttle shaft 2.000
103499-BX4X-2.125	Primary BX4 Xtreme throttle shaft 2.125
103499-BX4X-2.125	Secondary BX4 Xtreme throttle shaft 2.125
103499-BX4X-2.200	Primary BX4 Xtreme throttle shaft 2.200
102203-BX4X-2.200	Secondary BX4 Xtreme throttle shaft 2.200

### BLP 4150 ADJUSTABLE SECONDARY LINKAGE SYSTEM

BLP offers our new and improved throttle linkage kit for all BLP Billet and Holley® 4150 series carburetors

This kit allows to select from progressive, or 1:1 ratio with simple ease. This kit is all stainless and includes several different thicknesses to achieve best alignment between primary and secondary throttle shafts.



Part Number	Application
43601B-BLP	BLP 4150 Secondary linkage kit
49352-241B	Connector, Linkage Male Side 4150
49352-241A	Connector, Linkage Female Side Short

## BLP CARBURETORS COMPONENTS

### BLP 4500 HP EXTERNAL LINKAGE SYSTEM

BLP products is proud to introduce the original external linkage system for 4500HP series applications.

This revolutionary design moved all the linkage components from underneath the carburetor to outside the carburetor.

Thus reducing the risk of items falling into the motor and allowing the customer to make ratio changes without having to disassemble the linkage. The thinned in house made shafts offer approx. 15 CFM more than standard shafts.

Available in several throttle plate size options.



Part Number	Application
49352-2.125	1050-1150 HP 2.000-2.125"
49352-2.200	1350 HP 2.200"
49352-2.375	1350 HP w/ 2.375"
49352TPS-2.125	1050-1150 HP with TPS provision 2.125
49352TPS-2.200	1350 HP with TPS provision 2.200
49352TPS-2.375	1350 HP with TPS provision 2.375

### BLP 4500 EXTERNAL LINKAGE SERVICE PARTS

BLP 4500 External linkage service parts	
Part Number	Application
49352-20	Secondary cam bracket for external linkage system
49352-12	Linkage Pins
49352-241	Linkage Assembly kit
49352-241A	Connector, Linkage Female Side Short
49352-241B	Connector, Linkage Male Side 4150
49352-242BX4X	Secondary 4150 male link For BX4 Xtreme

### BLP BX SERIES EXTERNAL SHAFT KITS

BLP BX Series External Shaft Kits	
Part Number	Application
49352BX-2.400	BX Shaft kit 2.400
49352BX-2.500	BX Shaft kit 2.500
49352BX-2.600	BX Shaft kit 2.600
49352BX-2.700	BX Shaft kit 2.700
49352BX-2.800	BX Shaft kit 2.800

### BLP BX SERIES EXTERNAL LINKAGE SERVICE PARTS

BLP BX Series External Linkage service parts	
Part Number	Application
49352BX-25-Size	Primary BX Shaft 2.400-2.800
49352BX-26-Size	Secondary BX Shaft 2.400-2.800
49352-242B-MAX	Secondary 4500 male linkage For BX Series
49352-242B-MAX-EXT	Secondary 4500 male linkage For BXX Series
49352BX-20	Secondary cam bracket for BX applications
49352BX-Clip	Linkage Clip
49352BX-Screw	Linkage Screw
49352BX-SLV	Teflon support sleeve.





**THROTTLE PLATES**

Throttle Plates	
Part Number	Application
9215	500 CFM 1.688"
9325-1	850-1000 CFM stainless 1.750" no holes
9325-7	650-830 CFM stainless 1.688" no holes
9354	650-830 CFM stainless 1.688 no holes for rules legal applications
9228	1050-1150 CFM 2.000"
92281B	1050-1150 CFM 2.000" Anodized Black
9342	1250 CFM 2.125"
93421B	1250 CFM 2.125" Anodized Black

**4500 LARGE BORE SERIES THROTTLE PLATES**

Large bore throttle plates used for all BX45 series applications. Please specify required size when ordering. All these oversize plates are black anodized.

92281B-Size				
2.020	2.030	2.040	2.050	2.060
2.080	2.090	2.100	2.115	2.125
2.130	2.150	2.160	2.170	2.190
2.200	2.250	2.300	2.350	2.375

**BX SERIES THROTTLE PLATES**

Made for use in all BLP BX large bore applications. Please specify size when ordering.

9228BX-Size			
2.300	2.325	2.400	2.500
2.600	2.700	2.800	

**BLP CARBURETORS COMPONENTS**



**PUMP CAMS**

Part Number	Application
41218	White
41234	Black
41240	Red
41290	Green
41466	Orange
41330	Pink
41627	4500 White
41643	4500 Yellow
41664	Brown
41234BX	Black for BX series applications
41234BX45	Black for BX45 applications
41664BX	For Sure shot applications



**HOLLEY® METERING BLOCKS**

Part Number	Application
345925-3	500 CFM 2-BBL 0-4412
3411180-3	750 CFM 4-BBL 0-4479



**HOLLEY® HP SERIES METERING BLOCKS**

Part number	Application
3412201	500 CFM HP series
3411978	650 CFM HP series 4-BBL 0-80541-1

**BLP CARBURETORS COMPONENTS**



**BLP BILLET METERING BLOCKS**

In the 1980's BLP was the first to introduce a fully machined billet metering block for Holley® Carburetors. Since that time BLP has expanded our line to allow the most discerning carburetor builder a great selection to choose from. Gas, E85 and Alcohol BLP has an option for you. Can be purchased in unassembled or assembled states.

**Design Features:**

- **Black anodized for corrosion resistance and visual appeal.**
- **All fuel circuits adjustable**
- **Available with or without power valve provision**
- **Power valve channels lowered**
- **Idle feed restriction available in high or low position**
- **O-Ring or gasket seal for power valve.**
- **Custom engraving available.**

**UNDERSTANDING BLP METERING BLOCK PART NUMBERS FORMAT WHEN ORDERING**

##### = Metering block series

# = Power Valve Option  
0-Power Valve 1- Power Valve

#\_ = Emulsion configuration followed by Jet Series letter code

\_ = Anodize color B-Black G-Gold

**Examples: 51241-5R-B**

This is a 51241 series block with Power Valve, 5 hole emulsion, R Jets, colored black.



**GASOLINE BILLET METERING BLOCKS**

5124 Series billet metering blocks: 2-circuit gas billet metering blocks use the 1/4-32 XR series or Holley® standard main jets. A great alternative to the standard cast metering blocks which allows the builder control of their calibrations. With full adjustability of emulsion, power valve, and idle feed restrictions.

**5125 SERIES BILLET METERING BLOCKS**

2-circuit gas billet metering blocks with the same design features as the 5124 with the ability to locate the idle feed restriction in either the high or lower location, allowing the builder more options for their respective build.

**5170 SERIES BILLET METERING BLOCKS**

3-circuit gas billet metering blocks utilize the BLP XR or Holley® series 1/4-32 main jets. Fully adjustable emulsion, idle feed and power valve restrictions. Available with or without power valve provision, uses std Holley® or BLP 141293-BLP billet idle tubes.

**5170LE SERIES BILLET METERING BLOCKS**

3-circuit gas billet metering blocks similar to the 5170 series blocks, with the exception of the emulsion holes are located .004 lower measured from the bottom of the block.

**5120 SERIES BILLET METERING BLOCKS**

3-circuit gas billet metering block utilizing a unique design as a divorced idle system at a thickness of .850" (Does not require an idle tube) Fully adjustable idle, emulsion and power valve channel. Uses BLP XR or Holley® main jets. Required 5205-850 pump cover lever. Longer bowl screw required (5552-2.750)

## BLP CARBURETORS COMPONENTS

### ALCOHOL AND E85 BILLET METERING BLOCKS

#### 5130 SERIES BILLET METERING BLOCKS

2-Circuit alcohol billet metering blocked use the 1/4-32XR-Series or standard Holley® main jets. A great alternative to using a cast blocks allows the builder full of their calibration with full adjustability of emulsion, power valve restrictions and idle feed restrictions. Uses 6-32 x 3/16 brass set screws for emulsion and idle feed restrictions. 8-23 x 3/16 brass set screws for power valve restrictions. These blocks are purchased without calibrations, optional services available. Please contact your BLP sales representative for fully calibrated options.

#### 5135 SERIES BILLET METERING BLOCKS

2-Circuit alcohol billet metering blocks. Also available a great alternative to using a cast blocks allows the builder full control of their calibration with full adjustability of emulsion, power valve restrictions and idle feed restrictions. Uses 6-23 x 3/16 brass set screws for emulsion and idle feed restrictions. These blocks are purchased without calibration, optional services available. Please contact your BLP sales representative for fully calibrated options. Available to use BLP XL-Series main jets (350/32 thread pitch) or BLP H-Series (5/16-32) as well as standard Holley® Alcohol jets.

#### 5122 SERIES BILLET METERING BLOCKS

3-Circuit alcohol billet metering blocks utilizing a unique design at .850" thick these use a divorced idle circuit. (Does not require a idle tube) Along with emulsion, the third circuit passages are all adjustable. Available to use BLP XL-Series (350/32), BLP XH-Series (5/16-32) or standard Holley alcohol main jets (5/16-32) design. Please note when using these meeting blocks the idle and intermediate air bleeds swap locations on the top of the main body. See picture. (Must use BLP 5552-2.750) longer bowl screws, and BLP 5205B-.850 accelerator pump cover arms to install these metering blocks.

### METERING BLOCKS COMPONENTS

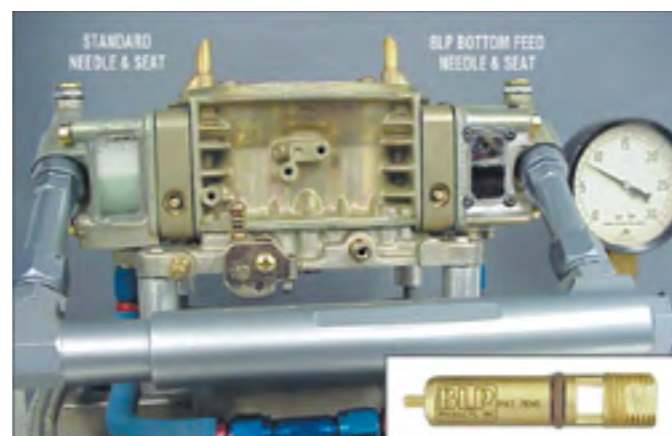
Part Number	Application
1540	Idle mixture screw
1540-BLP	Idle mixture screw stainless
271521	Idle mixture screw urethane seal
5312	Accelerator pump passage plug
59171	Vent whistle (Baffle)
59801	Vent whistle (Black)
5159	Vent whistle rivot
141293-BLP	Idle tube BLP straight.
7107	Main & Idle well .250" brass
7122	Lead ball .140" 3-circuit blocks
5307	Gasket retainer pin for billet blocks
5552	Bowl screw OE length
5552-2.750	Bowl screw 2.750"
5552-2.860	Bowl screw 2.860
5552-3.250	Bowl screw 3.250



### POWER VALVES

BLP offers only genuine Holley® power valves for accuracy. The stamped number on the power valve indicates amount of engine vacuum needed to close the power valve. These 4-window designs are great for gas, alcohol, and E85 applications.

Part Number	Application
25591Q-Size	2.5 - 3.5 - 4.5 - 5.5 - 6.5 - 7.5 - 8.5 - 9.5
25620	Power valve block off
81597	Power valve gasket
9020-020	Power valve o-ring/ billet blocks



## BLP CARBURETORS COMPONENTS

### NEEDLE AND SEAT ASSEMBLIES

BLP offers a broad range of needle and seats for the Holley® and BLP applications.



Part Number	Application
18135	.110 Holley®
18318Q	.120 Large foot design Holley®
18136-110	BLP Design .110
18136-120	BLP Design .120
18136-128	BLP Design .128
18136-140	BLP Design .140

### BLP BOTTOM FEED NEEDLE & SEATS FOR GAS

BLP has designed a bottom feed needle and seat that directs the fuel entering the bowl below the float level, which drastically reduces aeration in the float bowl.

This is accomplished utilizing a special designed Viton® needle that is shaped to all the fuel to pass around the needle and exit through the bottom of the housing.

**(Cannot be used with brass floats)**



Part Number	Application
18135BF-110	.110 Bottom Feed
18135BF-120	.120 Bottom Feed
18135BF-128	.128 Bottom Feed
18135BF-140	.140 Bottom Feed
18135BF-150	.150 Bottom Feed

### BLP TITANIUM BULLET NOSE NEEDLE AND SEAT FOR ALCOHOL

BLP's original design is great for circle track and most alcohol applications. This design allows a more stable recovery in the corners along with slightly higher pressure retention than our nail head.



Part Number	Application
18135T-150	.150 Bullet Head

### BLP TITANIUM NAIL HEAD NEEDLE AND SEAT FOR ALCOHOL.

BLP in continued effort to move forward in fuel delivery, developed a shape to deliver a high flow titanium needle.

The shape of the nose allows the highest flow through a standard double window needle housing. Used with Methonal and high horsepower gas applications.



Part Number	Application
18137T-128	.128 High Flow Nail Head
18137T-140	.140 High Flow Nail Head
18137T-150	.150 High Flow Nail Head
18137T-164	.164 High Flow Nail Head

### NEEDLE AND SEAT HARDWARE

Part Number	Application
8776	Needle and seat adjusting nut gasket
8776T-031	Needle and seat adjusting nut gasket Teflon®
8777	Needle and seat adjusting nut lock screw gasket
8777T-031	Needle and seat adjusting nut lock screw gasket Teflon®
5765	Needle and seat adjusting nut lock screw
39160	Needle and seat adjusting nut
9020-008	Needle and seat replacment o-ring.



## BLP CARBURETORS COMPONENTS

### HOLLEY® CLASSIC FUEL BOWLS

Part Number	Application
3411341-1	4150 Primary
3411335	4150 Secondary
3411343-1	4500 Primary
3411347-1	4500 Secondary



### FLOATS

Part Number	Application
16420	Brass center hung
16451	Nitrophyl center hung
16596	Nitrophyl center hung, Notched Secondary Drag Race
16599A	Nitrophyl, Primary Circle Track Wedged
16600A	Nitrophyl, Secondary Circle Track Wedged
43701	Nitrophyl, Primary Circle Track
43711	Nitrophyl, Secondary Circle Track
43721	Nitrophyl, Road Race Dual Wedge
43731	Nitrophyl, Secondary Notched Drag Race
43731-RR	Nitrophyl, Dual Wedge with jet extension cutout
43703	Primary Street/Strip
43703-DRG	Secondary Street Strip. Jet extension cutouts

### FLOAT BOWL COMPONENTS

Part Number	Application
5979	Center hung float bracket
51016	Float bracket screws
381216	Return spring for center pivot floats
381216-017	Float spring .017" wire diameter
381216-018	Float spring .018" wire diameter
1741	Float pivot pin
5765	Needle and seat lock screw
39160	Needle and seat lock nut
7225	Float bowl sight screw
9020-008	Needle and seat o-ring
8540	Float bowl sight screw gasket
8776	Needle and seat adjusting screw gasket
8776T-031	Needle and seat adjusting screw gasket Teflon®
8777	Needle and seat adjusting screw gasket



### LIGHTWEIGHT ALUMINUM FUEL BOWLS

Part Number	Application
3415063	Aluminum dual inlet, dual sight glass.
3415063-1	O-Ring for sight glass
3415063-2	Snap ring for sight glass
3415063-3	Sight glass
3415063B	Coated Aluminum dual inlet, sight glass. (Black Teflon) for gas applications
3415063BHC	Coated Aluminum dual inlet, sight glass. (Black hardcoat) for alcohol-E85 applications
3415063BLP	BLP Billet fuel bowl dual inlet dual sight glass (Anodized Black)
L34R29A	Aluminum, single inlet Primary, single sight glass.
L34R30A	Aluminum, single inlet Secondary, single sight glass.
L34R29A-2B	Aluminum, dual inlet Primary, single sight glass. (coated)
L34R30A-2B	Aluminum, dual inlet Secondary, single sight glass. (coated)
L34R29A-B	Coated Primary single inlet, single sight glass (Black teflon for gas applications)
L34R30A-B	Coated Secondary single inlet, single sight glass (Black teflon for gas applications)
L34R29A-2	Aluminum dual inlet, single sight glass Primary
L34R30A-2	Aluminum dual inlet, single sight glass Secondary
L34R29A-BHC	Coated Primary single inlet, single sight glass (Black Hardcoat for Alcohol/E85 applications)
L34R30A-BHC	Coated Secondary single inlet, single sight glass (Black Hardcoat for Alcohol/E85 applications)

## BLP CARBURETORS COMPONENTS

### FLOAT BOWL COMPONENTS

Part Number	Application
8777T-031	Needle and seat adjusting screw gasket Teflon®
23468	Pump nozzle rubber check valve
3415063-1	O-Ring for sight glass
3415063-2	Snap ring for sight glass
3415063-3	Sight glass
342183	Pump cover 30cc
342183U	Pump cover 30cc Ultra series shiny
342183UB	Pump cover 30cc Ultra series Black
342183BX	Pump cover 30cc, Billet shiny
342183BX-1	Pump cover 30cc Billet shiny (Cover only)
342183BX-2	Billet pump cover roll pin
342183CBX	Pump cover 30cc, Billet Black
342774	Pump cover 50cc
342774U	Pump cover 50cc Ultra shiny
342774UB	Pump cover 50cc Ultra Black
342774BX	Pump cover 50cc Billet shiny
342774CBX	Pump cover 50cc Billet Black
342774BX-610	Pump cover 50cc Billet for .610 billet.
342774BX-850	Pump cover 50cc Billet for .850 billet.
35342	Pump Diaphragm 30cc Black
351936	Pump Diaphragm 30cc Green GFLT
351074	Pump Diaphragm 50cc Black
351976	Pump Diaphragm 50cc Green GFLT
38569	Pump Diaphragm spring 30cc
381490	Pump Diaphragm spring 50cc
5369	Pump Diaphragm screws 30cc
5370	Pump Diaphragm screws 50cc
37133	Pump arm pivot
4744	Pump arm retainer clip
23258	Accelerator pump check needle
20387	Brass seat for accelerator pump check valve



### ACCELERATOR PUMP ARMS

Part Number	Application
631540	30cc Plastic 4150 pump arm assembly
63741	30cc Steel 4150 pump arm assembly
63833	50cc Steel 4150 pump arm assembly
63853	50cc Steel 4500 pump arm assembly
63853BX	70cc Steel 4500BX pump arm assembly



### FUEL BOWL INLET PLUGS

Part Number	Application
43151	BLP Aluminum 7/8-20 Black
43152	BLP Aluminum 7/8-20 Black w/ 1/8" npt
43152-4	BLP Aluminum 7/8-20 Black w/ -4an male
43153	BLP Aluminum -8 Port Plug Black w/ 1/8" female npt
43154	BLP Aluminum -8 Port Plug Black for Ultra series fuel bowls
75302	Aluminum fuel bowl washers 7/8-20 inlets
81185	Holley® Fuel bowl inlet gasket



### FUEL INLET FITTINGS

Part Number	Application
75301-8	-8AN male to 7/8-20 for Classic fuel bowls
75301-8AN	-8AN male to -8 O-ring for Ultra fuel bowls
75301-6	-6AN male to 7/8-20 for Classic fuel bowls
75301-6AN	-6AN male to 7/8 to -8 O-ring for Ultra series fuel bowls
75303	-8AN female swivel for 7/8-20 Classic fuel bowls
75304	-8AN female swivel for -8AN Ultra fuel bowls
75305	-8AN female swivel for 9/16-24 Demon® fuel bowls

## BLP CARBURETORS COMPONENTS



### BLP BILLET TELESCOPING FUEL LOGS

BLP introduced the first telescoping fuel log, working to allow one size fits all premise. This all billet solution fits most Holley® carburetors from 0-3310 to the 4500 series Dominator carburetors. BLP offers fitting to fit most fuel bowl combinations from classic Holley® to Demon® series applications. Please add -8 or -10 to end of part number for inlet fitting size required.  
**Available in Black Anodize**

Part Number	Application
75111	Fits all Holley® classic fuel bowls 7/8-20
75112	Fits Demon® style fuel bowl 9/16-24
75113	Fits Ultra series fuel bowls -8 o-ring
75115	Fuel log with 7491 bypass regulator built in.
9020-117V	Fuel log replacement o-rings (2) required



### BYPASS FUEL REGULATOR

For years now everyone has used a diaphragm type fuel bypass regulator. The issue with this style regulator is that it is difficult to maintain a good pressure curve. The pressure tends to be erratic and hard to adjust. BLP's 7491 regulator features a spring loaded poppet design that is calibrated to produce a smooth fuel pressure curve, being easily serviced in the field. Idle pressure is set and is not adjustable. High speed pressure is easily adjustable with stable performance.

Part number	Application
7491	Bypass regulator



### FUEL FILTER

Part Number	Application
7500	10" Filter complete with Cellulose filter insert
7500S	10" Filter complete with Stainless filter insert
75001	6" Filter complete with Cellulose filter insert
75001S	6" Filter complete with Stainless filter insert
7500-4	10" Replacement Cellulose filter insert
7500S-4	10" Replacement Stainless filter insert

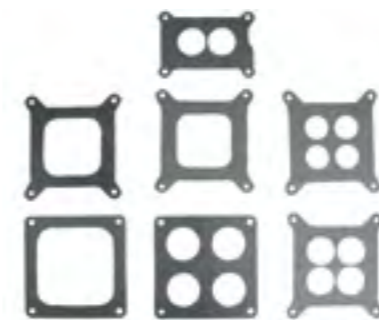


### METERING BLOCK AND FUEL BOWL GASKETS

Part Number	Application
5400VR455	Bowl gasket
5401VR455	2-circuit metering block gasket
5402VR455	3-circuit metering block gasket
5402RB	3-circuit metering block gasket with std Holley® and Braswell® intermediate feed locations
81597	Power valve gasket



## BLP CARBURETORS COMPONENTS

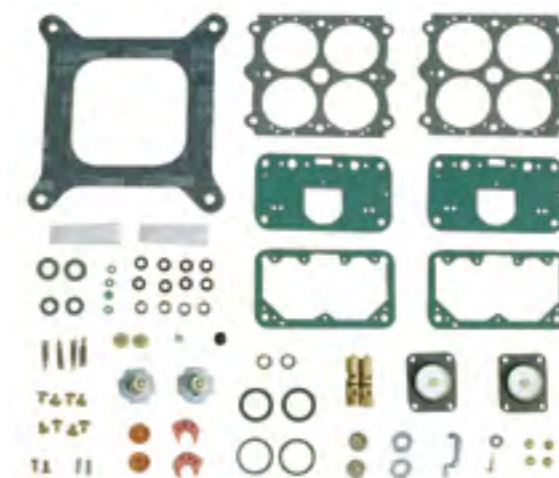


### CARBURETOR BASE MAIN BODY GASKETS

Part Number	Application
8966	500 CFM 2BBL
81031	650-750 CFM 4BBL
81158	830-1000 CFM 4BBL
81158-BX4X-2.000	Bx4 Xtreme 2.00-2.125 applications
81158-BX4X-2.200	Bx4 Xtreme 2.200 applications

### CARBURETOR TO INTAKE MANIFOLD GASKETS

Part Number	Application
8051	Open hole for 650-850 4150 applications
8055	4-hole for 650-850 4150 applications
8052	Open hole for 4500 2.000" applications
8054	2-hole for 350-500 2300 applications
8052BX4X-2.125-4	BX4 Xtreme 4-hole for 2.000-2.125 applications
8052BX4X-2.200-4	BX4 Xtreme 4-hole for 2.200 applications
8052BX	Open hole for BX series applications
8052BXX	Open hole for BXX series applications
8053	4-hole for 4500 series 2.000" applications
8053BX	4-hole for BX large bore 2.800" applications
8053BXX	4-hole for BXX series 2.800" applications
8053-2.200	4-hole for 4500 series 2.200" applications
8053-2.375	4-hole for 4500 series 2.375" applications



### BLP OVERHAUL KITS

Part Numbers	Applications
4560	350-500 CFM 2bbl
4561	350-500 CFM 2bbl alcohol (needle and seats not included)
4566-30cc	600-850 CFM w/ 30cc acc pump
4566-50cc	600-850 CFM w/ 50cc acc pump
4567	600-850 CFM w/50cc acc pump alcohol (needle and seats not included)
4572-2C	4500 series 2-circuit
4572-3C	4500 series 3-circuit
4572A	4500 series 3-circuit alcohol (Needle and seats not included)



### Did you Know?

During the 1960's and 70's with not many ready made racing parts available Bo either made most of the racing parts or modified existing ones. Bo was fortunate to have grown up in an era which provided him with an open and creative mind.

## BLP CARBURETORS COMPONENTS

### HOLLEY® / BLP SCREW, FASTNERS & HARDWARE

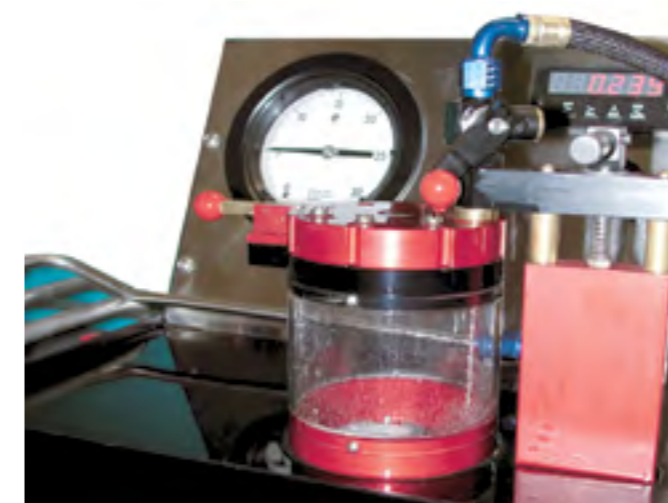
Part Number	Application
5567	Base plate to main body screws
55671	Base plate to main body screws for 5205 spacer
51260	OEM Holley® throttle plate screw 4500 series
56351	1/8" Stainless button head throttle plate screw
56352	3/16" Stainless button head throttle plate screw
56353	1/4" Stainless button head throttle plate screw
5552	Float bowl screw std length
5552-2.750	Float bowl screw 2.750 length
5552-2.860	Float bowl screw 2.860 length
5552-3.250	Float bowl screw 3.250 length
7225	Fuel Bowl sight screw
51016	Float bracket screw
51271	Throttle adjustment screw 4150
5372	Throttle adjustment screw 4500
51601	Secondary throttle adjustment screw 4150
51601-1	Secondary throttle adjustment screw 4150 (Billet base)
1540	Idle mixture screw
1540-BLP	Idle mixture screw stainless
5854	Pump nozzle screw solid design
51244BX	Pump nozzle screw hollow stainless design
5369	30cc pump cover screw
5370	50cc pump cover screw
5682	Pump cam screw
5765	Needle and seat lock nut
39160	Needle and seat lock screw
5584	Secondary pump bracket screw

### HARDWARE PARTS

PartNumber	Application
5159	Vent whistle rivet
59171	Float bowl vent baffle
59801	Float bowl vent baffle black press in
46395-.010	Linkage washer .010
46395-.020	Linkage washer .020
46395-.031	Linkage washer .031
46395-.040	Linkage washer .040
46395-.050	Linkage washer .050
46395-.060	Linkage washer .060
48183	Linkage cotter pin
48183SS	Linkage cotter pin stainless
4744	Pump arm retainer clip
5307	Metering block gasket retainer pin (Billet)



## BLP JETS



The modern day race engine has become extremely efficient. Today's fuel curve requirements are quite demanding and need to be accurate to insure proper calibration. One factor in achieving such achievements are main jets that are accurate in flow and consistent in design.

How many times have you made a jet change and found the engine did not respond as you had hoped? or run properly?

BLP Xtreme Series main jets are precision machined to meet the needs of the most discerning carburetor tuner, engine builder or enthusiast.

Some factors can be attributed to the main jet being used, or damage caused using specific tools such as a screw driver to install and remove your jets. BLP manufactures 3 unique designed jets to meet any of your carburetor tuning needs, from standard pump gas, oxygenated fuels to large alcohol applications.

All BLP Xtreme series jets are compatible with all known racing fuels.

#### Features:

Hex head for easy removal and reduces damage caused by tools such as screwdrivers used in many common main jet applications. Available in **(3) thread sizes**

- XR Series 1/4-32
- XH Series 5/16-32
- XL Series 3/8-32

All jets reamed to size and pin gaged for accuracy. Stamped in decimal sizes, so no guess work needed.

Please note recommended torque value for Xtreme series jets is 15 inch lbs. Max 16 inch lbs.

### BLP XR SERIES JETS



BLP XR series main jets are precision machined in-house in .001" increments from .050"-.173".

1/4-32 thread pitch fits most all Holley® or BLP gas metering blocks.

Using stringent tolerances these jets are sure to tighten or expand your tuning range.

Manufactured with 5/16" hex for easy removal that resist damaging the entry way and feed hole that is most common when using tools such as a screwdriver.

*Also available in extended version.*

### BLP XH SERIES JETS



BLP XH series main jets are precision machined in-house in .001" increments from .110"-.200".

5/16-32 thread pitch fits most all Holley® or BLP alcohol metering blocks.

Using stringent tolerances these jets are sure to tighten or expand your tuning range.

Manufactured with 5/16" hex for easy removal that resist damaging the entry way and feed hole that is most common when using tools such as a screwdriver.

*Also available in extended version.*

### BLP XL SERIES JETS



BLP XL series main jets are precision machined in-house in .001" increments from .104"-.260".

3/8-32 thread pitch fits most all BLP alcohol metering blocks.

Using stringent tolerances these jets are sure to tighten or expand your tuning range.

Manufactured with 5-16" hex for easy removal that resist damaging the entry way and feed hole that is most common when using tools such as a screwdriver.

*Also available in extended version.*



**BLP 5500 AIR BLEEDS**

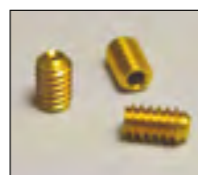
Feature a screwdriver slot and a special radius on the top of the bleed.



The radius smooths out the incoming air as it passes over the bleed. This feature gives you better response when changing the air bleed size. 10-32 thread size, can be used for fuel and oil. All pin gaged for accuracy.

**BLP 5540 SERIES**

BLP 5540 Emulsion jets are machined from 3/16" long brass set screws.



Female hex socket for easy installation using an allen wrench. Available in 4 thread sizes. All pin gaged for accuracy.

**5540-4/40-SIZE**

Blank	.014	.018	.021	.022	.024
.026	.028	.029	.030	.031	.034
.035	.036	.037	.038	.039	.040
.042	.046	.047	.052	.059	.060
.061	.062	.063	.064	.065	.067
.068	.070	.071	.073	.074	.076
.078	.080	.082	.084	.086	.088
.090	.092				

**5540-6/32-SIZE**

Blank	.014	.018	.022	.024	.026
.028	.029	.030	.031	.032	.033
.034	.035	.036	.037	.040	.046
.048	.052	.055	.056	.059	.062

**5540-8/32-SIZE**

Blank	.014	.018	.022	.024	.026
.028	.029	.030	.031	.032	.033
.034	.035	.036	.037	.040	.046
.048	.052	.055	.059	.062	.065
.067	.070	.073			

**5540-10/32-SIZE**

Blank	.014	.018	.022	.024	.026
.028	.029	.030	.031	.032	.033
.034	.035	.036	.037	.040	.046
.048	.052	.055	.059	.062	.065
.067	.070	.073			

**BLP JETS**

**BLP DRIVE IN RESTRICTORS FOR AIR AND FUEL**

BLP drive in restrictors are machined from brass and designed to fit classic Holley® main bodies and metering blocks. They can also be used for fuel.

Available in to different O.D. Sizes .122" and .158"

**5541 SERIES .122" O.D.**

Blank	.014	.018	.022	.024	.028
.029	.030	.031	.032	.033	.034
.036	.037	.038	.039	.040	.042
.046	.052	.055	.057	.061	.062
.067	.070	.073			

**5542 SERIES .158" O.D.**

.028	.029	.031	.039	.042	.046
.052	.055	.057	.059	.062	.070
.072	.076	.078			



**XR SERIES MAIN JET KITS**

Part Number	Application
<b>5550XRK1</b>	BLP XR Jet assortment .062-.100 (2) each
<b>5550XRK-X</b>	BLP XR Jet assortment .062-.100 (2) each std and extended length
<b>5550XRK2</b>	BLP XR Jet assortment .102-.140 (2) each
<b>5550XRK2-X</b>	XBLP XR Jet assortment .102-.140 (2) each std and extended length
<b>5550XRK3</b>	BLP XR Jet assortment .142-.173 (2) each
<b>5550XRK3-X</b>	BLP XR Jet assortment .142-.173 (2) each std and extended length

**BLP JETS**

**CROSSOVER FROM BLP TO HOLLEY® MAIN JETS**

<b>56</b>	.055	<b>79</b>	.085
<b>57</b>	.055	<b>81</b>	.087
<b>58</b>	.057	<b>82</b>	.090
<b>59</b>	.057	<b>83</b>	.091
<b>60</b>	.057	<b>84</b>	.094
<b>61</b>	.059	<b>85</b>	.095
<b>62</b>	.060	<b>86</b>	.096
<b>63</b>	.061	<b>87</b>	.098
<b>64</b>	.062	<b>88</b>	.100
<b>65</b>	.063	<b>89</b>	.101

BLP in an effort to test and be part of our racing community has invested in a new bracket race truck look for us in 2020,

As we introduce Ms. America to the scene, we will be Pro and Super Pro racing as well using this for a test bed when introducing new products.



**CROSSOVER FROM BLP TO HOLLEY® MAIN JETS**

<b>67</b>	.064	<b>90</b>	.103
<b>68</b>	.066	<b>91</b>	.106
<b>69</b>	.067	<b>92</b>	.109
<b>70</b>	.070	<b>93</b>	.110
<b>71</b>	.073	<b>94</b>	.112
<b>72</b>	.075	<b>95</b>	.115
<b>73</b>	.076	<b>96</b>	.116
<b>74</b>	.077	<b>97</b>	.118
<b>75</b>	.078	<b>98</b>	.121



## BLP FUEL PUMPS

### WHICH FUEL PUMP IS BEST?

In our opinion it is always best to use a -8 return line with a belt driven fuel pump. This type fuel return system handles fuel spikes better than an internal by-pass type pump. It also keeps the fuel cooler when using gasoline. However having said that, we build and sell more adjustable, internal by-pass fuel pumps than we do the return line style fuel pumps. The reason for that is they are simple to plumb and easy to adjust. Used in the right application and maintained properly they are virtually trouble free.

### BELT DRIVEN FUEL PUMPS FOR ALCOHOL AND GAS

Alcohol has become a very popular race fuel to use with a Holley® carburetor. The big problem is the fuel supply requirement using alcohol. The fuel requirement is twice the amount needed with gasoline. A 700 hp engine consumes 700 pounds of fuel an hour when operating at full throttle. Simple math tells you that no electric and/or mechanical fuel pump will handle this requirement. The electric and 6 valve mechanical pumps have excessive high idle fuel pressure which can cause flooding and rich conditions at idle and part throttle but they cannot keep up with full throttle fuel demand. The solution to the problem is a fuel pump where the pressure is low (3-5 psi) at idle then increases with engine RPM and the pressure is fully adjustable to your needs. These pumps have become very popular on Drag Race engines using gasoline as well as alcohol. The fuel pressure is low when doing a water burn out and staging and does not have the high fuel pressure spike that is common with electric pumps. With an 800 hp engine it takes less than 1 hp to operate this pump. Also, there is no drain on the battery.

At BLP Products we have developed 2 versions of belt driven fuel pumps. One features an internal fuel by-pass system that enables the user to regulate and adjust the fuel pressure without having to use a separate by-pass valve and a return line to the tank. The second version is a fuel pump with no internal regulator and can be used with a BLP 7490 fuel by-pass regulator or the installer can use their own by-pass system. These are available in 4 different gear sizes .400", .500", .600", and .700" thick gears. By using different thickness gear wear plates the same body can be used for all 4-size gears. This gives us the option of changing pump volumes by just changing the gears and wear plates.

### FEATURES:

- **The adjusting arm can be rotated a full 360 degrees without having to disassemble the pump.**
- **Pump can be used with or without a return line.**
- **All billet construction.**
- **Available in 4 volume sizes.**
- **Available for right or left hand mounting. Can be serviced in the field.**
- **Easily mounted with simple plumbing.**



### EXTERNAL RETURN FUEL PUMPS

Providing that you use the proper return regulator these fuel pumps can be used in any application.

### ADVANTAGES:

- **Externally regulated pumps handle spikes created by on and off throttle use in many circle track applications.**
- **Lower idle pressure and larger spread from idle to full throttle operation.**

### DISADVANTAGES:

- **Must utilize return line (-8an recommended).**
- **BLP 7491 bypass regulator recommended.**
- **Remove disadvantages.**



## BLP FUEL PUMPS

### INTERNAL BY-PASS FUEL PUMPS

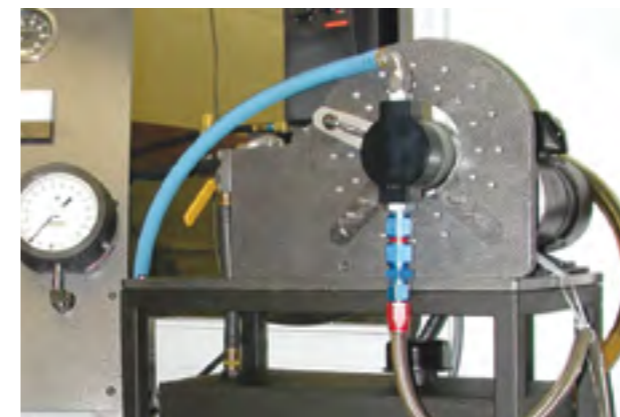
These fuel pumps by-pass the excess fuel internally to the low-pressure side of the fuel pump. The pressure is adjustable at the fuel pump. No regulators of any kind are required or recommended.

### ADVANTAGES:

- **Easy to install and does not require a return line.**
- **Easy to adjust and maintain.**

### DISADVANTAGES:

- **Decreased range of pressure from idle to full throttle.**
- **Recommended to run fuel line as low as possible if trying to utilize rear mounted cell.**
- **Not recommended for circle track applications when using gas.**



### FUEL PUMP VOLUMES

The validity of advertised fuel pump volumes is only accurate as the method used for testing. In other words, a fuel pump will show more volume if it is gravity fed with no outlet restriction than if the pump had to lift the fuel and maintain a constant pressure. This holds especially true with a mechanical fuel pump.

**EXAMPLE:** a mechanical pump may pump 108 gallons per hour at 1 pound of pressure but only 60 gallons per hour if it had to maintain 5 pounds of pressure. We test and flow our pumps in a Real world environment. To simulate racing conditions we lift the fuel 18", pump it through a 1/2" line and maintain race condition fuel pressure.

### BLP FUEL PUMP DRIVEN AT 50% OF ENGINE SPEED WITH A FIXED PRESSURE



.400 THICK GEAR PUMP	
1800 Pump RPM at 50 PSI flows	81 GPH
2000 Pump RPM at 12 PSI flows	96 GPH
2500 Pump RPM at 12 PSI flows	120 GPH
3000 Pump RPM at 12 PSI flows	144 GPH
3500 Pump RPM at 12 PSI flows	159 GPH
4000 Pump RPM at 12 PSI flows	174 GPH
.500 THICK GEAR PUMP	
1800 Pump RPM at 50 PSI flows	108 GPH
2000 Pump RPM at 12 PSI flows	118 GPH
2500 Pump RPM at 12 PSI flows	140 GPH
3000 Pump RPM at 12 PSI flows	168 GPH
3500 Pump RPM at 12 PSI flows	188 GPH
4000 Pump RPM at 12 PSI flows	203 GPH
.600 THICK GEAR PUMP	
1800 Pump RPM at 50 PSI flows	120 GPH
2000 Pump RPM at 12 PSI flows	136 GPH
2500 Pump RPM at 12 PSI flows	168 GPH
3000 Pump RPM at 12 PSI flows	196 GPH
3500 Pump RPM at 12 PSI flows	215 GPH
4000 Pump RPM at 12 PSI flows	227 GPH
.700 THICK GEAR PUMP	
1800 Pump RPM at 50 PSI flows	138 GPH
2000 Pump RPM at 12 PSI flows	152 GPH
2500 Pump RPM at 12 PSI flows	191 GPH
3000 Pump RPM at 12 PSI flows	223 GPH
3500 Pump RPM at 12 PSI flows	239 GPH
4000 Pump RPM at 12 PSI flows	247 GPH

**FUEL PUMP SIZE APPLICATION**

.400 WIDE GEAR PUMPS	
• 4 cylinder when using alcohol or gas.	
• V-8 and V-6 when using gas only.	
.500 WIDE GEAR PUMPS	
• Engines using gas up to 850HP.	
• Engines using alcohol up to 750HP.	
• Tunnel ram set up on gas.	
• Marine gas big block.	
• Most all circle track and drag application.	
600 WIDE GEAR PUMPS	
• High horsepower gas engines 750-900HP.	
• Engines using alcohol 700-800 HP.	
• Engines using tunnel ram with alcohol.	
• Drag cars with rear mounted fuel cells and 60-foot ET times from 1.25-1.30.	
.700 WIDE GEAR PUMPS	
• Engines using alcohol over 900HP.	
• Engines using tunnel ram with alcohol.	
• This pump should utilize a return line.	
• Drag cars with rear mounted fuel cells and 60-foot ET times from 1.20-1.30.	
• Drag cars with rear mounted fuel cells and 60-foot ET times from 1.20-1.30.	

**FUEL PUMPS WITH INTERNAL BY-PASS AND ADJUSTABLE FUEL PRESSURE**

**NOTE:** RH pumps mount on the passenger side LH pumps mount on the drivers side.

Part Number	Application
7600-400	RH .400" wide gear pump
7600-500	RH .500" wide gear pump
7600-600	RH .600" wide gear pump
7601-400	LH .400" wide gear pump
7601-500	LH .500" wide gear pump
7601-600	LH .600" wide gear pump

**FUEL PUMPS WITH NO INTERNAL BY-PASS**

These pumps have the same internal parts and volume as model 7400 series.

**NOTE:** The same pump can be mounted on either side.

Part Number	Application
7700-400	.400" wide gear pump
7700-500	.500" wide gear pump.
7700-600	.600" wide gear pump.
7700-700	.700" wide gear pump.

**BLP FUEL PUMPS**

**FUEL PRESSURE GAUGE**

0-15 pound liquid filled fuel pressure gauge. The diameter is 1.600" and the inlet is a 1/8 male pipe thread.

Part Number	Application
7524	0-15 pound fuel pressure gauge.



**FUEL BYPASS REGULATOR**

The BLP 7491 bypass regulator is a fully adjustable and does an excellent job reducing fuel spikes, when the throttle is lifted. With static idle pressure and a fully adjustable high speed screw makes for smooth transition and drivability. All Billet construction made in the USA.

Part Number	Application
7491	Bypass regulator

**FUEL PUMP SHUT OFF VALVE**

IHRA and NHRA require a fuel shut off valve when using a belt driven fuel pump. The BLP shut off valve is all billet construction with a -8 in and out fitting which can be mounted in the BLP fuel pump between the pump and carburetor outlet side of the pump. It can also be mounted in the line between the pump and carburetor.

Part Number	Application
7340	2-way shut off valve without fittings.
7341	3-way shut off valve without fittings.
73401	O-ring kit.
73402	Operating arm.
73403	Teflon seal.
7329	Special bulkhead design fitting that lets you install the valve into a BLP fuel pump and rotate in any position.
7323	Outlet fitting, -8AN.
7324	Outlet fitting, -10AN.
7325	Outlet fitting, -12AN.

**BLP FUEL PUMPS**

**TOP-OIL FOR ALCOHOL**

A synthetic lubricant that mixes with alcohol to lubricate the rotating parts of the fuel pump and the engine valve guides. Also helps preserve rubber hoses, neoprene hoses and carburetor internal parts. Top-oil comes in handy plastic quart bottles and mixes at a ratio of 1/2 ounce per gallon of fuel. One quart treats 55 gallons the pump and carburetor.

Part Number	Application
KL107	Top-oil (quart).



**COMPLETE KITS TO INSTALL BELT DRIVE FUEL PUMP INCLUDE:**

- Fuel pump
- Outlet fitting is a -8AN
- Inlet fitting is available in a -8, -10, or a -12AN.
- Standard drive is 50% with a 14-28th combination.
- Fuel pump pulley is available in 28 or 32 tooth.
- Crankshaft drive gear is available in 14 or 16 tooth.
- Drive gear belt guards (2).
- Crankshaft drive mandrel with bolt and hat washer.
- Belt
- All mounting hardware.
- Instructions.

**NOTE:** Specify if you want a -8 or -10 inlet fitting. The last 3 numbers of the part number indicate the size of the pump.

**Example:** 7612CR-500 is a kit with a .500 gear pump. A right hand pump is mounted on the passenger side and a left hand pump is mounted on the driver side.

**RECOMMENDATION FOR PUMP SELECTION:**

- Right hand pumps are mounted on the passenger's side.
- Left hand pumps are mounted on the driver's side.
- The standard outlet fitting is a -8AN, but you can substitute a -10AN or -12AN.
- The last 3 numbers of the part number indicate the pump gear size.

**Example:** a 7600-.500 is an internal by-pass fuel pump with .500 wide gears. Kits are available with or without a drive mandrel. The kits without the mandrel include the 1.000" I.D. drive gear and (2) belt guards. For dry sump engines order the kit without a mandrel and then add the appropriate mandrel

**SBC INTERNAL BYPASS FUEL PUMP KITS (COMPLETE)**

**7612CR FUEL PUMP KIT - INTERNAL BYPASS**

SB Chevy wet sump engine with RH mount location, 10 o'clock inboard position. Available in .400, .500 and .600 wide gear configuration. **NOTE:** This pump location will not clear a fan blade. If you use a fan blade then use kit number 7413.



Part Number	Qty	Application
7440	1	RH 10 o'clock mount bracket
300L050	1	30" x .500" 3/8 pitch drive belt
7020	1	Wet sump drive mandrel
7006	1	Hat washer
7025-5.00	1	7/16-20 x 5.0" Grd 8 hex bolt
6184-7/16	1	Bolt washer
7103-14L050	1	14th x .500 drive gear steel
7013-2.250	2	Belt guard washers
7150	1	28th x .500 upper drive pulley
7600	1	RH Internal bypass fuel pump

**76121CR - FUEL PUMP KIT WITHOUT DRIVE MANDREL**

**7613CR FUEL PUMP KIT – INTERNAL BYPASS**

SB Chevy wet sump engine with RH mount location, 9 o'clock outboard position. Available in .400, .500 and .600 wide gear configuration.



Part Number	Qty	Application
7441	1	RH 9 o'clock mount bracket
322L050	1	32.2" x .500" 3/8 pitch drive belt
7020	1	Wet sump drive mandrel
7006	1	Hat washer
7025-5.00	1	7/16-20 x 5.0" Grd 8 hex bolt
6184-7/16	1	Bolt washer
7103-14L050	1	14th x .500 drive gear steel
7013-2.250	2	Belt guard washers
7150	1	28th x .500 upper drive pulley
7600	1	RH Internal bypass fuel pump

**76321CR - FUEL PUMP KIT WITHOUT DRIVE MANDREL**

**7615CR FUEL PUMP KIT – INTERNAL BYPASS**

SB Chevy wet sump engine with RH low mount. Available in .400, .500 and .600 wide gear configuration.



Part Number	Qty	Application
7442R	1	RH Low mount bracket
240L050	1	24.0" x .500" 3/8 pitch drive belt
7020	1	Wet sump drive mandrel
7006	1	Hat washer
7025-5.00	1	7/16-20 x 5.0" Grd 8 hex bolt
6184-7/16	1	Bolt washer
7103-14L050	1	14th x .500 drive gear steel
7013-2.250	2	Belt guard washers
7150	1	28th x .500 upper drive pulley
7600	1	RH Internal bypass fuel pump

**76151CR - FUEL PUMP KIT WITHOUT DRIVE MANDREL**

**BLP FUEL PUMPS**

**BBC INTERNAL BYPASS FUEL PUMP KITS (COMPLETE)**

**7632CR FUEL PUMP KIT – INTERNAL BYPASS**

BB Chevy wet sump engine with RH mount location 10 o'clock inboard position. Available in .400, .500 and .600 wide gear configuration.



Part Number	Qty	Application
7444R	1	RH 10 o'clock mount bracket.
300L050	1	30" x .500" 3/8 pitch drive belt.
7016	1	Wet sump drive mandrel.
7007	1	Hat washer.
7026-5.5	1	1/2-20 x 5.5" Grd 8 hex bolt.
6184-1/2	1	Bolt washer
7103-14L050	1	14th x .500 drive gear, steel.
7013-2.250	2	Belt guard washers.
7150	1	28th x .500 upper drive pulley
7600	1	RH Internal bypass fuel pump.

**76321CR - FUEL PUMP KIT WITHOUT DRIVE MANDREL**

**7634CR FUEL PUMP KIT – INTERNAL BYPASS**

BB Chevy wet sump engine with RH low mount location. Available in .400, .500 and .600 wide gear configuration.



**Note:** This kit will not work with standard GM water pump must use CSI/CSR or Shogun style pump with this kit.

Part Number	Qty	Application
7429	1	RH Low mount bracket
270L050	1	27.0" x .500" 3/8 pitch drive belt
7016	1	Wet sump drive mandrel
7007	1	Hat washer
7026-5.500	1	1/2-20 x 5.0" Grd 8 hex bolt
6184-1/2	1	Bolt washer
7103-14L050	1	14th x .500 drive gear steel
7013-2.250	2	Belt guard washers
7150	1	28th x .500 upper drive pulley
7600	1	RH Internal bypass fuel pump

**76341CR - FUEL PUMP KIT WITHOUT DRIVE MANDREL**

**BLP FUEL PUMPS**

**7712CR FUEL PUMP KIT - RETURN LINE REQUIRED**

SB Chevy wet sump engine with RH mount location 10 o'clock inboard position. Available in .400, .500, and .600 wide gear configuration.



Part Number	Qty	Application
7440	1	RH 10 o'clock mount bracket
300L050	1	30" x .500" 3/8 pitch drive belt
7020	1	Wet sump drive mandrel
7006	1	Hat washer
7025-5.0	1	7/16-20 x 5.0" Grd 8 hex bolt
6184-7/16	1	Bolt washer
7103-14L050	1	14th x .500 drive gear, steel
7013-2.250	2	Belt guard washers
7150	1	28th x .500 upper drive pulley
7700	1	External bypass fuel pump

**77121CR - FUEL PUMP KIT WITHOUT DRIVE MANDREL**

**7713CR FUEL PUMP KIT – RETURN LINE REQUIRED**

SB Chevy wet sump engine with RH mount location 9 o'clock outboard position. Available in .400, .500, and .600 wide gear configuration.



Part Number	Qty	Application
7441	1	RH 9 o'clock mount bracket
322L050	1	32.2" x .500" 3/8 pitch drive belt
7020	1	Wet sump drive mandrel
7006	1	Hat washer
7025-5.0	1	7/16 -20 x 5.0" Grd 8 hex bolt
6184-7/16	1	Bolt washer
7103-14L050	1	14th x .500 drive gear, steel
7013-2.250	2	Belt guard washers
7150	1	28th x .500 upper drive pulley
7700	1	External bypass fuel pump

**77131CR - FUEL PUMP KIT WITHOUT DRIVE MANDREL**

**7715CR FUEL PUMP KIT – RETURN LINE REQUIRED**

SB Chevy wet sump engine with RH low mount position. Available in .400, .500, and .600 wide gear configuration.



**\*\* Will not work with stock water pump \*\***

Part Number	Qty	Application
7442R	1	RH Low mount bracket
240L050	1	24" x .500" 3/8 pitch drive belt
7020	1	Wet sump drive mandrel
7006	1	Hat washer
7025-5.0	1	7/16 -20 x 5.0" Grd 8 hex bolt
6184-7/16	1	Bolt washer
7103-14L050	1	14th x .500 drive gear, steel
7013-2.250	2	Belt guard washers
7150 1	1	28th x .500 upper drive pulley
7700	1	External bypass fuel pump

**77151CR - FUEL PUMP KIT WITHOUT DRIVE MANDREL**

**7732CR FUEL PUMP KIT – RETURN LINE REQUIRED**

BB Chevy wet sump engine with LH mount location 2 o'clock inboard position. Available in .400, .500, and .600 wide gear configuration.



Part Number	Qty	Application
7444R	1	RH 10 o'clock mount bracket
300L050	1	30" x .500" 3/8 pitch drive belt
7016	1	Wet sump drive mandrel
7007	1	Hat washer.
7026-5.5	1	1/2 -20 x 5.5" Grd 8 hex bolt
6184-1/2 1	1	Bolt washer
7103-14L050	1	14th x .500 drive gear, steel
7013-2.250	1	Belt guard washers
7150	1	28th x .500 upper drive pulley
7700	1	External bypass fuel pump

**77321CR - FUEL PUMP KIT WITHOUT DRIVE MANDREL**

**7734CR FUEL PUMP KIT – RETURN LINE REQUIRED**

BB Chevy wet sump engine with RH low mount location. Available in .400, .500, and .600 wide gear configuration.



**Note:** This kit will not work with standard GM water pump must use CSI/CST or Shogun style pump with this kit.

Part Number	Qty	Application
7429	1	RH Low mount bracket
270L050	1	27.0" x .500" 3/8 pitch drive belt
7016	1	Wet sump drive mandrel
7007	1	Hat washer
7026-5.5	1	1/2 -20 x 5.5" Grd 8 hex bolt
6184-1/2	1	Bolt washer
7103-14L050	1	14th x .500 drive gear steel
7013-2.250 2	2	Belt guard washers
7150	1	28th x .500 upper drive pulley
7700	1	External bypass fuel pump

**77341CR - FUEL PUMP KIT WITHOUT DRIVE MANDREL**

**7612FR FUEL PUMP KIT – INTERNAL BYPASS**

SB Ford with RH mount location 10 o'clock inboard position. Available in .400, .500 and .600 wide gear configuration.



**Note:** This kit works only with the factory Ford water pump.

Part Number	Qty	Application
7445R	1	RH 10 o'clock mount bracket
300L050	1	30" x .500" 3/8 pitch drive belt
7103-14L050	1	14th x .500 drive gear steel
7013-2.250	2	Belt guard washers
7150	1	28th x .500 upper drive pulley
7600	1	RH Internal bypass fuel pump

**Note:** Drive mandrel not included, must be ordered seperate

**BLP FUEL PUMPS**

**73121CR FUEL PUMP KIT – RETURN LINE REQUIRED**

SB Ford with RH mount location 10 o'clock inboard position. Available in .400, .500 and .600 wide gear configuration.



**Note:** This kit works only with the factory Ford water pump.

Part Number	Qty	Application
7445R	1	RH 10 o'clock mount bracket
300L050	1	30" x .500" 3/8 pitch drive belt
7103-14L050	1	14th x .500 drive gear steel
7013-2.250	2	Belt guard washers
7150	1	28th x .500 upper drive pulley
7700	1	RH External bypass fuel pump

**Note:** Drive mandrel not included, must be ordered seperate

**7432FR FUEL PUMP KIT – INTERNAL BYPASS**

BB Ford with RH mount location 9 o'clock inboard position. Available in .400, .500 and .600 wide gear configuration.



**Note:** This kit works only with the factory Ford water pump.

Part number	Qty	Application
7446	1	RH 9 o'clock mount bracket
285L050	1	28.5" x .500" 3/8 pitch drive Belt
7103-14L050	1	14th x .500 drive gear steel
7013-2.250	2	Belt guard washers
7150	1	28th x .500 upper drive pulley
7600	1	RH Internal bypass fuel pump

**Note:** Drive mandrel not included, must be ordered seperate

**BLP FUEL PUMPS**

**73321FR FUEL PUMP KIT - RETURN REQUIRED**

BB Ford with RH mount location 9 o'clock inboard position. Available in .400, .500 and .600 wide gear configuration.



**Note:** This kit works only with the factory Ford water pump.

Part Number	Qty	Application
7446	1	RH 9 o'clock mount bracket
285L050	1	28.5" x .500" 3/8 pitch drive belt
7103-14L050	1	14th x .500 drive gear steel
7013-2.250	2	Belt guard washers
7150 1	1	28th x .500 upper drive pulley
7700	1	RH External bypass fuel pump

**Note:** Drive mandrel not included, must be ordered seperate

**BB CHRYSLER INTERNAL BYPASS FUEL PUMP KITS (COMPLETE) 7662R FUEL PUMP KIT – INTERNAL BYPASS**

BB Chrysler with RH mount location 10 o'clock inboard position. Available in .400, .500 and .600 wide gear configuration.

**Note:** This kit works only with the factory Chrysler water pump.

Part Number	Qty	Application
7448	1	RH 10 o'clock mount bracket
322L050	1	32.2" x .500" 3/8 pitch drive belt
7103-14L050	1	14th x .500 drive gear steel
7013-2.250	2	Belt guard washers
7150	1	28th x .500 upper drive pulley
7400	1	RH Internal bypass fuel pump

**Note:** Drive mandrel not included, must be ordered seperate

**BB CHRYSLER EXTERNAL BYPASS FUEL PUMP KIT – RETURN LINE REQUIRED 7362R FUEL PUMP KIT - RETURN LINE REQUIRED**

BB Chrysler with RH mount location 10 o'clock inboard position. Available in .400, .500 and .600 wide gear configuration.

**Note:** This kit works only with the factory Chrysler water pump.

Part Number	Qty	Application
7448	1	RH 10 o'clock mount bracket
322L050	1	32.2" x .500" 3/8 pitch drive belt
7103-14L050 1	1	14th x .500 drive gear steel
7013-2.250	2	Belt guard washers
7150	1	28th x .500 upper drive pulley
7700	1	RH External bypass fuel pump

**Note:** Drive mandrel not included, must be ordered seperate

**BB FORD EXTERNAL BYPASS FUEL PUMP KIT – RETURN LINE REQUIRED 73321FR FUEL PUMP KIT - RETURN LINE REQUIRED**

BB Ford with RH mount location 9 o'clock inboard position. Available in .400, .500 and .600 wide gear configuration.

**Note:** This kit works only with the factory Ford water pump.

Part Number	Qty	Application
7446	1	RH 9 o'clock mount bracket
285L050	1	28.5" x .500" 3/8 pitch drive belt
7103-14L050	1	14th x .500 drive gear steel
7013-2.250	2	Belt guard washers
7150	1	28th x .500 upper drive pulley
7399	1	RH External bypass fuel pump

**Note:** Drive mandrel not included, must be ordered seperate

**FUEL PUMP PULLEYS, DRIVE GEARS AND DRIVE MANDRELS**



Pulleys are hard coated for long life. The fuel pump pulleys have a belt guard installed.

Part Number	Application
<b>7103-14L050</b>	14 tooth .500" wide steel drive gear.
<b>7103-16L050</b>	16 tooth .500" wide aluminum drive gear.
<b>7150</b>	28 tooth .500" wide fuel pump pulley.

**MOUNTING BRACKETS**

Fuel pump mounting bracket comes with aluminum spacers and mounting bolts.

Part No.	Application
<b>7429</b>	B/B Chevy, RH low mount. Use belt 270L050.
<b>7440</b>	S/B Chevy 10 o'clock position right hand mount This mount moves the fuel pump inboard close to the water pump. Use belt 300L050
<b>7441</b>	S/B Chevy 9 o'clock position right hand mount. designed for circle track engines using a fan blade. It moves the fuel pump outboard and back toward the head for more fan blade clearance. Use belt 322L050.
<b>7442R</b>	S/B Chevy RH low mount that bolts to the 2 lower 3/8 x 16 holes in the front of the block. Use belt 240L050.
<b>7442L</b>	S/B Chevy LH low mount that bolts to the 2 lower 3/8
<b>7443</b>	S/B and B/B left hand mount designed to bolt to the Moroso self contained water pump. Use belt 285L050.
<b>7444R</b>	B/B Chevy RH 10 o'clock position. The mount moves the fuel pump inboard close to the water pump. Use belt 300L050.
<b>7444L</b>	B/B Chevy LH 2 o'clock position. The mount moves the fuel pump inboard close to the water pump. Use belt 285L050.
<b>7381</b>	S/B Chevy right hand mount to use an Enderle fuel pump (requires a 7146 idler bracket). Use belt 345L050.
<b>7445R</b>	S/B Ford mount, right hand side. Use belt 300L050.
<b>7445L</b>	S/B Ford mount, left hand side. Use belt 300L050.
<b>7446</b>	B/B Ford RH side mount. Use belt 285L050.
<b>7448</b>	B/B Chrysler RH side mount. Use belt 322L050.
<b>7483</b>	B/B Chevy left hand low mount that mounts in close to the crankshaft. Use belt 225L050.

**FUEL PUMP SERVICE PARTS**



Part No.	Application
<b>7650</b>	RH pump body with internal by-pass
<b>7652</b>	Pump body without internal by-pass.
<b>7653</b>	Mounting arm with 360 degrees rotating feature
<b>7654</b>	Main drive shaft
<b>7655</b>	Idler shaft
<b>7456-400</b>	.400" wide pump gear (1)
<b>7456-500</b>	.500" wide pump gear (1)
<b>7456-600</b>	.600" wide pump gear (1)
<b>7456-700</b>	.700" wide pump gear (1)
<b>7457-100</b>	.100" thick gear wear plate
<b>7457-150</b>	.150" thick gear wear plate
<b>7457-250</b>	.250" thick gear wear plate
<b>7458</b>	Pressure adjuster assembly
<b>7458-ADJ</b>	Pressure adjustment threaded screw only
<b>7458-NUT</b>	Pressure adjustment Jam Nut only
<b>74581</b>	Sleeve that converts the model 7400 internal 7399 fuel pump.
<b>7459</b>	By-pass poppet
<b>7660</b>	Front cover
<b>7661</b>	Carbon bushing
<b>7470</b>	Pressure spring for alcohol
<b>7471</b>	Pressure spring for gas
<b>7473</b>	Front bearing
<b>7474</b>	Front seal
<b>7475</b>	Snap ring kit (3)
<b>7476</b>	O-ring kit (5)
<b>7477</b>	Dowel pin for main body
<b>7478</b>	Dowel pin for pump gear
<b>7479</b>	Pump body bolt 8/32 x 1 1/4 SCS
<b>7480</b>	By-pass poppet bushing
<b>7481</b>	Overhaul Kit (Includes: all o-rings, snap rings, front seal and bearing)
<b>7482</b>	O-rings (2) for adjuster assembly by-pass fuel pump to a return line style model

**BLP FUEL PUMPS**

**BLP FUEL PUMPS**



**FUEL PUMP DRIVE BELTS**

Part Number	Application
<b>195L049</b>	19.5" x 1/2 52 teeth
<b>210L050</b>	21.0" x 1/2 56 teeth
<b>225L050</b>	22.5" X 1/2 60 teeth
<b>240L050</b>	24.0" x 1/2 64 teeth
<b>255L050</b>	25.5" x 1/2 68 teeth
<b>285L050</b>	28.5" x 1/2 76 teeth
<b>300L050</b>	30.0" x 1/2 80 teeth
<b>322L050</b>	32.2" x 1/2 84 teeth
<b>345L050</b>	34.5" x 1/2 86 teeth

**MOUNTING SPACERS**

Aluminum .750" diameter spacer with a .390" through hole.

Part Number	Application
<b>7449-.500</b>	.500" long spacer
<b>7449-.750</b>	.750" long spacer
<b>7449-.840</b>	.840" long spacer
<b>7449-.955</b>	.955" long spacer
<b>7449-1.600</b>	1.600" long spacer
<b>7449-1.680</b>	1.680" long spacer
<b>7449-1.750</b>	1.750" long spacer
<b>7449-2.000</b>	2.000" long spacer
<b>7449-2.350</b>	2.350" long spacer
<b>7449-3.000</b>	3.000" long spacer
<b>7449-4.400</b>	4.400" long spacer

**FUEL FILTERS**

Carburetors require a good filtration system especially when utilizing alcohol as a fuel source, our answer is our unique filter system that is constructed from .150" wall tubing with an O.D. of 2.500" only using the finest in domestic grade materials. Removable end caps with -8AN, -10AN or -12AN fittings. This lightweight housing is available in two lengths 10.00" OAL and 5.00" OAL. and are anodized for corrosion resistance along with two filter options cellulose and stainless steel for easy cleaning and reuse.



**7500 FUEL FILTER**

The total length of this filter including the end caps is 10.5". The cellulose filter element is 7 micron that can flow 750 gallons of fuel per hour.

Part Number	Application
<b>7500</b>	Complete fuel filter with cellulose element
<b>7500-4</b>	Replacement cellulose filter element
<b>7500-4S</b>	Replacement stainless filter element
<b>7500-5</b>	Fuel filter clamp (1)
<b>7500S</b>	Complete with stainless steel element



**75001 FUEL FILTER**

This filter is designed to fit in limited space such as a dragster chassis yet still maintain the high fuel flow that is needed. The total length of this filter including the end caps is 6.5". The cellulose filter element is 10 micron that can flow 350 gallons of fuel per hour.

Part Number	Application
<b>75001</b>	Complete fuel filter
<b>75001-4</b>	Replacement cellulose filter element
<b>75001-4S</b>	Replacement stainless filter element
<b>75001S</b>	Complete with stainless steel element

## PUMP MOUNTING

In most applications the fuel pump mount bolts to the right hand side (passenger side) of the water pump using the (2) water pump bolts. New water pump bolts and the



correct spacers are furnished in the kit. Make sure the bolt hole spot face area on the water pump is flat where the spacers seat. This mount is designed to keep the pump low and compact. With this mount you can use either a 28th or a 32th pulley with the same length belt. Place a protractor on the face of the balancer and make sure the mount is on the same angle as the balancer face.

## DRIVE MANDREL S/B CHEVROLET

Make sure the balancer bore is free from burrs and the mandrel will slide in and out easily. Install the mandrel in the balancer using anti-seize in the balancer bore. There is a shoulder on the mandrel and it must seat against the balancer. Install the drive gear and space it to line up with pump pulley using mandrel spacers. The pump pulley is also adjustable in and out. When installing the gear and spacers always use anti-seize. If it is a wet sump engine then the spacing on the mandrel is already set. Use a small amount of Loc-tite on the balancer bolt and torque to 60-65 lbs. If for some reason your application requires a longer or shorter mandrel we can furnish the correct length.

## DRIVE MANDREL B/B CHEVROLET

The big block drive mandrel fits in the counter bore of the harmonic balancer and this counter bore must be concentric. If you are using an after market balancer such as an ATI the counter bore is concentric and requires no machining. The mandrel is furnished with (2) 1/8" roll pins that must be installed in the balancer if you are driving a dry sump pump. If you are driving only the fuel pump and not a dry sump pump then you will not need the drive pins.

To locate the drive pins install the mandrel in the balancer and drill two holes through the mandrel with a 1/8" drill bit.

Install the drive pins in the balancer. Use anti-seize in the balancer counter bore when installing the mandrel. When installing the mandrel bolt use a small amount of Loc-tite. Use the same procedure as the small block to install the drive gear. Torque the balancer bolt to specified torque.

## BLP FUEL PUMPS

### BELT INSTALLATION

Install the pump pulley using anti-seize on the pump shaft. Align the pump pulley with the crank pulley. Use a small amount of Loc-Tite and tighten the set screw over the key way first. Install the remaining set screw using a small amount of Loc-Tite. Install the belt and adjust the belt to 1/8" to 1/4" deflection. Do not over tighten the belt. The end of the pump shaft has 1/4 x 28 female threads. It is a good safe guard to install a large washer and bolt here. If for some reason the pulley got loose then the washer would contain the pulley.

### FUEL LINE FITTING LOCATION

We have incorporated a design in this fuel pump to enable you to rotate the pump arm in relation to the body. The arm can be rotated in 22 degree increments or a total of 16 different positions. This will allow you to position the pump on the engine for the best possible fuel line inlet and outlet location. The mounting position can be changed with the pump on or off the engine.

- 1. Remove the pump from the engine then lay the pump on its back with the shaft pointing upwards.**
- 2. Remove the (7) front Allen head bolts using a 9/64" Allen wrench.**
- 3. Hold main body and rotate the arm until you have the desired position. Install and tighten the bolts.**

**CAUTION: Do Not pull the pump sections apart with screws out**

### FUEL LINE ROUTING

It is very important to keep the fuel line from the tank to the pump as low as possible. After you route the line over the rear end housing then route the line as low as possible to the pump. DO NOT route the line along the top frame rail and never route the line higher than the fuel pump.

### FUEL CELL

Make sure the fuel cell is vented with a -8AN line, nothing smaller. If you are using foam in your fuel cell you will need to use some sort of screen to keep the foam away from the suction line. The suction from the pump can pull the foam into the line causing a loss of pressure.

## BLP FUEL PUMPS

### DRAG RACE FUEL CELLS

We recommend using a front mounted tank if your 60 foot times are quicker than 1.20. On a rear tank mount make sure your fuel cell is mounted as high as possible.

### RECOMMENDED PSI PRESSURES

Gas	3-6 lbs. Idle	7-9 at Full Throttle
Alky	3-6 lbs. Idle	9-11 lbs at Full Throttle

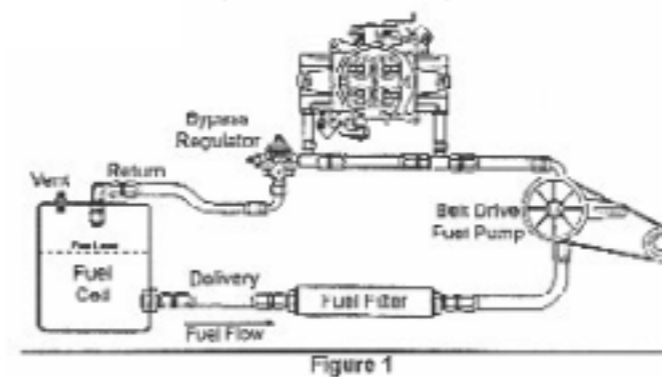
### PRIMING THE PUMP

To prime a dry fuel system jack the rear of the car up. Remove the pump from the mounting bracket but leave the inlet line hooked up. Hold the pump and lower it as far as you can then turn the pump clockwise by hand to prime. After you see fuel coming out of the outlet side, then mount the pump and install the belt. If for some reason you run the engine out of fuel or the engine sets a long time you can use this same method to prime the pump.

**CAUTION:** Do not spin the pump without some fuel or a little synthetic oil in the pump.

### FUEL PRESSURE

It is very important to use a fuel pressure gauge. If your racing sanctioning body does not let you run a gauge in the cockpit then Autometer makes an electric fuel pressure gauge that is accurate and dependable. When you are using gauge that is accurate and dependable. When you are using large jets especially in the .180 to .200 range and you make a large jet change it can actually raise or lower your fuel pressure. This is something that you need to be aware of and check.



### PRESSURE SETTING FOR INTERNAL BY PASS FUEL PUMPS

The pressure is preset when we assemble and test the pump and it should be very close. Always set your pressure for the top end. Do not be concerned about the idle pressure. If it is a Drag car then read the pressure at the top of low gear or near the finish line. If it is a Circle Track car then read the pressure at the end of the straightaway.

If the idle falls within 2-6 pounds don't be concerned. To raise the pressure loosen the lock nut on the pump adjuster and turn the adjuster in to raise the pressure and back the adjuster out to lower the pressure. Adjust 1/4 of a turn until finish line pressure is set.

### PRESSURE SETTING WHEN USING A BLP NON BY-PASS FUEL PUMP AND A 7491 RETURN LINE REGULATOR HIGH SPEED ADJUSTMENT

Top end pressure adjustment is set by loosening the lock-nut and turning the adjustment set screw. Turn in for increased fuel pressure and out for less. After setting screw, be sure to re-tighten lock-nut.

### TOP OIL

When using alcohol for fuel we recommend you mix a synthetic top oil with the alcohol. This keeps the pump lubricated as well as the valve guides and helps keep corrosion down in all the rubber hoses. Our part number KL107 Top Oil works very well.

**WARNING: Never mix petroleum base oil with alcohol.**

### STORING THE PUMP

If you do not use the pump every week then remove the inlet and outlet line and drain the pump. Install the inlet line first. Pour a small amount of synthetic oil in the outlet fitting, rotate the pump a few revolutions by hand and install the outlet line. To start the engine refer to the priming procedure.

**MAINTENANCE**

If you are going to leave the engine idle for a long period of time or store the pump, take the outlet line off and pour a small amount of synthetic oil in the pump and rotate the pump by hand. On the internal bypass pump about every six months you need to service the pressure bypass poppet valve. Remove the pump from the engine. Remove the adjuster and pressure spring; note how the spring goes in. The spring is a progressive wound spring and the "tight end wound" end always goes in first.

Position the pump so the hole in the side of the pump that houses the poppet will be pointed down toward the palm of your hand. The poppet will then fall out into your hand.

Clean the brass bushing in the pump housing with brake clean or alcohol. Polish the poppet with scotch bright or 600 grit sandpaper and clean with alcohol. Make sure the poppet is free in the bore. Install the poppet with the window pointed down toward the bottom of the pump. Install the spring on the adjuster with the "tight end wound" of the spring going into the pump. The poppet has a recess machined into the spring end to locate the spring. Check spring length with dial calipers. If the spring is short then stretch to the proper length.

**Spring lengths using alcohol spring:**

.500 wide gear pump 1.800  
.600 and .700 wide gear pump 1.670

**Spring lengths using gas spring:**

.400 wide gear pumps 1.600  
.500 wide gear pumps 1.600

Make sure when you install the adjuster and spring assembly that the spring goes inside the recess of the poppet.

**NOTE:** Never use a petroleum based lube in the pump. Always use a synthetic based lube when you work on the pump. The KL107 Top Lube makes an excellent assembly lube.

**INSTALLATION TIPS**

- **Size the pump correctly and do not use any larger pump than necessary. Bigger is not better.**

**BLP FUEL PUMPS**

- **Turn the pump the right RPM for your engine combination. BLP offers several different ratios.**
- **Route your fuel inlet lines as low as possible. Never route the fuel line where it is higher than the pump inlet fitting.**
- **The fuel pump uses up a certain amount of its efficiency to suck the fuel from the fuel cell to the pump. For that reason we recommend a -8 or -10 fuel line and not a -12 inlet line.**
- **The fuel cell must be vented with a -8AN line, nothing smaller.**
- **On Drag cars a rear-mounted fuel cell should be mounted as high as possible.**
- **On Drag cars with 60 foot times quicker than 1.20 should have a front mounted fuel cell.**
- **Use a high flow fuel filter and mount the filter as close to the tank as possible. Not all filters are suitable for a belt driven pump. If you have a doubt about your filter then contact BLP a doubt about your filter then contact BLP Products.**
- **When you select a pump mounting position always select the lowest mount possible. Note: all of the mounting positions shown in the catalog will work but, if you have a choice, pick the lowest mount.**
- **Do not over tighten the belt.**
- **Internal by-pass pumps are not recommended for gas circle track applications (use of a return line and regulator is recommended when used in a gas circle track application). This is due to the possibility of vapor lock issues when temperature conditions warrant. Internal regulated pumps can be converted to externally regulated pumps using the BLP 74581 conversion sleeve and BLP 7491 by-pass regulator.**
- **If you are currently using a water pump drive pulley or a crank trigger that is bolted to the balancer then you will have to machine a hole in the part so the mandrel will just slip through the pulley. The mandrel will now center the part and insure it runs true with the crankshaft. Do not depend on the (3) attaching bolts to center the part.**

**BLP FUEL PUMPS****TROUBLE SHOOTING****PUMP WILL NOT PRIME**

- **The inlet line to the pump cannot have any vacuum leaks. Make sure all the fittings are tight and do not have a suction leak.**

**NOTE:** A fitting can have a suction leak and not leak fuel. Make sure the fuel line is not soft where it goes through the hose end. This can cause the line to collapse when the pump is trying to pull fuel from the tank but the line will relax then the pump is not turning.

- **Poppet not seated. Remove adjuster and make sure poppet is free and seated, clean if necessary. (See Maintenance section). Check spring length with dial calipers. If the spring is short then order a new spring.**
- **Spring lengths using alcohol spring:**  
.500 wide gear pump 1.800  
.600 wide gear pump 1.670
- **Spring lengths using gas spring:**  
.400 wide gear pumps 1.600  
.500 wide gear pumps 1.600
- **Internal damage to pump.**
- **Fuel cell not vented.**

**ERRATIC OR LOW FUEL PRESSURE**

- **Fuel cell not vented.**
- **Suction leak in fuel inlet line.**
- **Poppet sticking, Internal By-Pass type pump (see Maintenance section).**
- **Key missing from pump gear.**
- **Return line regulator needs serviced, Non By-Pass type fuel pump.**
- **Internal damage to pump.**
- **Fuel filter too restrictive.**
- **Foam in the fuel cell is sucked into the fitting.**
- **Construct a screen to keep the foam away from the outlet fitting in the fuel cell.**

**FUEL SHUT OFF VALVES**

- **NHRA requires a fuel shut off valve to be installed. These are some recommendations if you have to use a Shut Off Valve.**
- **Do not close the shut off valve and run the engine out of fuel. This can damage the fuel pump.**
- **Always make sure the shut off valve is open when starting.**
- **Never close the shut off valve with the engine running.**
- **If you want the shut off valve to be functional then purchase a 3-way shut off valve and run one line to the fuel cell.**

**POSSIBLE FUEL SIPHON FROM FUEL CELL**

- **If you have a full fuel cell and the pump is lower than the fuel cell (which it should be) then there is the possibility that fuel could siphon through the fuel pump, past the carburetor needle and seat and then into the engine.**
- **If the car sets overnight or longer then you should be aware of this and remove and plug the fuel line at the carburetor.**
- **Belt or cam driven fuel pumps do not contain any check valves and fuel can siphon through the pump.**

**PRESSURE SPIKES IN THE CORNERS CAUSING THE CARBURETOR TO FLOOD**

- **Pump speed too high. Check the RPM that you are turning the fuel pump compared to the RPM you are turning the engine. If you are using a return line then you may need to service the regulator. Call us on the free tech line.**



## BLP ENGINE DRIVE ACCESSORIES

### BLP DRIVE MANDREL

BLP Products has made a serious commitment to furnish the engine builder with high quality components to drive dry sump pumps, water pumps, alternators, power steering, fuel pumps or any crankshaft driven accessory.

A major problem when outfitting an engine with any crankshaft driven accessory such as a dry sump has to use a long balancer bolt to hold the drive mandrel on. These bolts can range from 4.500" to 8.000" long. Special high cost studs and crankshaft

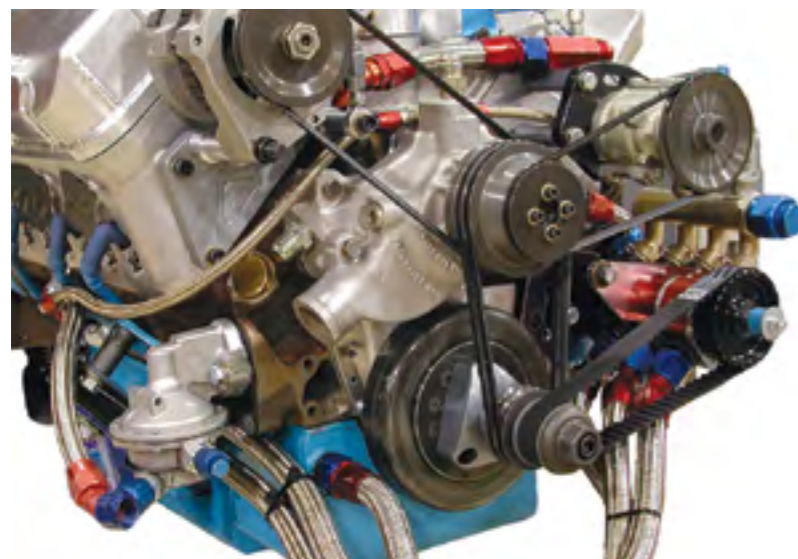
snouts are being used to try and combat these problems. Even with this effort expensive failures are commonplace. When the front drive fails it usually means an engine failure.

To eliminate these problems BLP offers a unique design drive mandrel system that does not use a through bolt. A stock length balancer bolt is used. The mandrel bolts to the balancer with three bolts and it is recessed in the rear to clear the balancer bolt head. On the Ford Engines the mandrel has a centering ring machined in the mandrel. The GM engines use a special centering washer that also holds the balancer on. The centering washer insures that the 1.000" mandrel snout runs true with the crankshaft.

We wanted the mandrel to be dependable, lightweight and run true with the crankshaft. The mandrel must also accept the popular 1.000" I.D. pulleys and drive gears currently being used.

Where the 1.000" portion of the mandrel starts the radius was increased to .150". The base of the mandrel was beefed up and a 7/16 X 20 heli-coil was installed in the strongest part of the base. The reason the heli-coil was installed in the base is this is the strongest part of the mandrel. The drive gears and pulleys are stacked on the mandrel and held in place with a 7/16" grade 8 bolt. The 7/16 X 20 grade 8 bolt goes through the 1.000" portion and screws into the base.

The following 3-bolt drive mandrels fit both Big Block, Small Block Chevy and Dodge engines. Also fits the Small Block Chevy using a Big Block crankshaft snout. You must use the proper centering washer that is listed. The part number suffix is the length of the 1.000" portion of the mandrel. The overall length is also listed.



## BLP ENGINE DRIVE ACCESSORIES

### CHEVY THROUGH BOLT DRIVE MANDRELS

These drive mandrels have a hole through the center which holds the balancer on with a through bolt that goes into the crankshaft. The extended portion of the mandrel will which holds the balancer on with a through bolt that goes accept all 1.000" drive gears. Drive keys are installed. Listed length of the mandrel is the amount the mandrel extends out of the harmonic balancer. Steel mandrels have a black oxide coating and aluminum mandrels are anodized. Part number suffix is the length of the 1.000" portion of the mandrel.



Part Number		Application
7001 (Steel)	S/B CHEVY	3.000"- 3.500"- 4.000" - 4.500" - 6.000"
7001A (Aluminum)	S/B CHEVY	3.000"



### S/B -B/B CHEVY (Aluminum)

Part Number		Application
7001A	SBC	3.000" 3.500" 4.000" 4.500" 6.000"
7004A	BBC	3.000" 3.500" 4.000" 4.500"



### DRIVE MANDREL KITS

Kits include mandrel, hat washer and grade 8 bolt.

Part Number	Application
70011	3.000" 3.500" 4.000"
70041	3.000" 3.500" 4.000" 4.500"



### BELT DRIVE FUEL PUMP DRIVE MANDRELS

Drive mandrels to drive a belt driven fuel pump. The drive gear is spaced out the correct amount from the harmonic balancer and does not require any spacers. Comes with drive keys installed.

Part Number	Application
7020	Fits S/B Chevy. Space from the balancer to the back of the drive gear is 2.200".
70201	Fits S/B Chevy. Includes hat washer and bolt
7016	Fits B/B Chevy. Space from the balancer to the back of the drive gear is 2.800"
70161	Includes the hat washer and attaching bolt



### HEX HEAD HAT WASHER

Hat washer features a recessed 1 1/8" hex head. Back of hat washer is recessed to fit over the drive mandrel and lock onto the 1/8 drive key. This feature allows you to rotate the engine in either direction without fear of loosening or stretching the mandrel bolt.

Part Number	Application
70062	Steel hex head hat washer
70062A	Heavy duty aluminum hard coated hat washer



### CONVENTIONAL HAT WASHERS FOR 1.000" DRIVE MANDRELS

Part Number	Application
7006	S/B Chevy with 7/16 hole
7007	B/B Chevy with 1/2 hole
7007-5/8	Ford with a 5/8 hole
7007-3/4	Chrysler with a 3/4 hole



**BELT GUARDS**

Aluminum belt guards .100" thick with a 1.000" I.D. The guards are available with an outside diameter of 2.250" or 2.500". They are hard coated for long life and can be used as a belt guard or mandrel spacer.

Part Number	Application
7013-2.250	(1) with 2.250" O.D.



**MANDREL SPACERS**

Aluminum anodized spacers with a 1/8" keyway that will fit any 1.000" diameter mandrel. One side of the spacer features a .150 radius on the I.D. portion. The last 3 or 4 digits of the part number indicate the length.

Part No.	Application					
7008	.250	.375	.444	.500	.625	.750
	.930	1.000	1.500	1.600	1.750	2.000

**GRADE 8 SAE MANDREL BOLTS**

Part Number	Application
7045-4.000	7/16 x 4.000" socket head
7045-4.500	7/16 x 4.500" socket head
7045-6.000	7/16 x 6.000" socket head
7025-4.500	7/16 x 4.500" hex head
7025-5.000	7/16 x 5.000" hex head
7025-5.500	7/16 x 5.500" hex head
7025-6.000	7/16 x 6.000" hex head
7025-6.500	7/16 x 6.500" hex head
7025-7.000	7/16 x 7.000" hex head
7026-4.500	1/2 x 4.500" hex head
7026-5.000	1/2 x 5.000" hex head
7026-5.500	1/2 x 5.500" hex head
7026-6.000	1/2 x 6.000" hex head
7026-6.500	1/2 x 6.500" hex head
7026-7.000	1/2 x 7.000" hex head

**BLP ENGINE DRIVE ACCESSORIES**

**BALANCER BOLTS**

180 PSI bolts with a 12-point head.

Part Number	Application
7045-1.500	7/16 x 20 1.500" long
7045-2.500	7/16 x 20 2.500" long

**OIL PUMP DRIVE GEARS**

Lightweight billet aluminum drive gears available for oil pumps with a 5/8 shaft and hard coated for long life. The teeth are radiused for easy belt installation. For 3/8 pitch L series "Gilmer" 1.000 wide square tooth belts. Gears are 1.400" wide and belt guards are not needed.



Part Number	Application
7117-28	28 tooth
7117-32	32 Tooth

**DRIVE GEARS FOR DRY SUMP AND FUEL PUMP**

Billet aluminum drive gears that use the 3/8 pitch L series "Gilmer" 1.000" wide, square tooth belts. Available for all 1.000" drive mandrels with 1/8 keyway. The gears feature a .150" radius on one side of the I.D. This enables you to run the gear flush against the mandrel if you chose to do so. The gears are hard coated for long life. For the 3/8 pitch L series "Gilmer" square tooth 1.000" wide belt.



Part Number	No. of teeth	Width
7100-16L100	16	1.000"
7100-18L100	18	1.000"
7100-17L100	17	1.000"

For the 3/8 pitch L series "Gilmer" square tooth .500" belt.		
Part Number	No. of teeth	Width
7100-14L050	14	.500" Steel
7100-16L050	16	.500" (aluminum)

**BLP ENGINE DRIVE ACCESSORIES**

Belts		
3/8 pitch L series "Gilmer" belts .500" wide		
Part Number	No. of teeth	Length
195L050	52	19.5"
210L050	56	21.0"
225L050	60	22.5"
240L050	64	24.0"
255L050	68	25.5"
285L050	76	28.5"
300L050	80	30.0"
322L050	84	32.2"
345L050	86	34.5"

3/8 pitch L series "Gilmer" belts 1.000" wide.		
Part Number	No. of teeth	Length
225L100	60	22.5"
240L100	64	24.0"
255L100	68	25.5"
270L100	72	27.0"
285L100	76	28.5"
300L100	80	30.0"

**LIGHTWEIGHT POLY-V ENGINE ACCESSORIES DRIVE SYSTEMS**

BLP Products now offers a new lightweight 7mm Poly-V belt pulley system designed to drive engine accessories, such as water pumps, power steering pumps, alternators and fuel pumps. The system uses the Goodyear Poly-V Series belt and BLP designed 7mm Poly-V pulleys. All pulleys are hard coated and there is a large selection of ratios available. Mandrel if you chose to do so. The gears are hard coated for long life. For the 3/8 pitch L series "Gilmer" square tooth 1.000" wide belt.



- Some of the advantages are:*
- **More room around the front of the engine**
  - **Longer Belt Life**
  - **Lighter weight**
  - **Less friction and slower rim speed**
  - **Less inertia required so acceleration is improved**

WEIGHT COMPARISONS	
Average 8.000" billet water pump pulley 34.2 oz.	BLP Poly-V water pump pulley 10.9 oz.
Average 5.000" crankshaft drive pulley 24.6 oz.	BLP Poly-V crankshaft drive pulley 5.0 oz.
Average billet alternator pulley 10.4 oz.	BLP Poly-V alternator pulley 4.6 oz.
Standard billet power steering pulley 14.0 oz.	BLP Poly-V power steering pulley 6.4 oz.
Standard water pump drive belt 14.0 oz.	Goodyear Poly-V drive belt 3.2 oz.

By using the BLP Poly-V drive system you can remove 4 to 5 pounds off the end of the crankshaft.

7mm PULLEY SPEED RATIOS		
Water Pump speed to engine RPM		
Crank Pulley Diameter	Water Pump Pulley Diameter	Ratio to RPM
2.720"	4.120"	66%
2.720"	6.000"	45%
Alternator speed to engine RPM when driven from the water pump pulley		
Water Pump Diameter	Alternator Diameter	Ratio to RPM
4.120"	3.650"	74%
4.120"	5.500"	49%
6.000"	3.650"	74%
6.000"	5.500"	49%

Power steering pump speed when driven from the front of the water pump using the standard water pump speed of 66% of engine RPM		
Drive Pulley Diameter	Power Steering Diameter	Ratio to RPM
2.950" 3.950" 49%	3.950"	49%
2.950" 5.950" 33%	5.950"	33%
3.450" 3.950" 57%	3.950"	57%
Power steering pump speed when driven from the crankshaft		
Crank Pulley Diameter	Power Steering Diameter	Ratio to RPM
2.720"	3.950"	68%
2.720"	5.250"	52%
2.720"	5.950"	46%

**WATER PUMP PULLEYS**



Part Number	No. of Grooves	Dia.	Application
9030-1-4.000	1	4.120"	Chevy & Ford
9030-2-4.000	2	4.120"	Chevy & Ford
9030-3-4.000	3	4.120"	Chevy & Ford
9030-3-4.050	3	4.120"	Chevy & Ford w/ .050 offset
9030-3-4.100	3	4.120"	Chevy & Ford w/ .100 offset
9031-2-4	2	4.120"	Dodge
9031-3-4	3	4.120"	Dodge

**7mm CRANKSHAFT PULLEYS**



**PLEASE NOTE:** The crankshaft pulley selection determines the drive ratio of the part number 9030 and 9031 water pump pulleys. Select the crankshaft pulley for the water pump drive ratio that would best fit your application.

Part Number	Application	No. of grooves	Ratio
9040-1-2.574	Chevy	1	66%
9040-2-2.574	Chevy	2	66%
9040-2-3.535	Chevy	2	85%
9044-1 F	Ford	1	66%
9044-4	Ford	2	66%



**ALTERNATOR PULLEYS**

Part Number	Diameter	Ratio	Hole Dia.
9050-3.650	3.650"	74%	.670"
90501-3.650	3.650"	74%	.590"

**BLP ENGINE DRIVE ACCESSORIES**

**POWER STEERING PULLEYS**



Part Number	Dia.	Ratio	Application
9070-3.950	3.950"	49%	GM
9070-5.950	5.950"	33%	GM
9071-3.950	3.950"	49%	Ford & Dodge
9071-5.950	5.950"	33%	Ford & Dodge

**POWER STEERING DRIVE PULLEY WHEN DRIVEN FROM THE FRONT OF THE WATER PUMP**



Part number	Dia.	Application
9060-2.950	2.950"	Standard Drive Ratio
9060-3.450	3.450"	8% Increase

**POWER STEERING PULLEYS WHEN DRIVEN FROM THE CRANKSHAFT WITH A 2.720" DRIVE GEAR**



Part Number	Dia.	Ratio	Application
9070-3.950	3.950"	68%	GM
9070-5.250	5.250"	52%	GM
9070-5.950	5.950"	46%	GM
9071-3.950	3.950"	68%	Ford & Dodge
9071-5.250	5.250"	52%	Ford & Dodge
9071-5.950	5.950"	46%	Ford & Dodge

**CUSTOM MACHINING PROCESSES AVAILABLE WITH THE QUALITY YOU EXPECT FROM BLP**

**BLP ENGINE DRIVE ACCESSORIES**

**POLY V-BELTS**



Part Number	Application
7M615	Belt from crankshaft to water pump (all engines). When using 66% drive ratio
7M630	Power steering belt, Chevy engine. Using the standard drive ratio
7M650	Power steering belt with 88% ratio. Water pump drive belt using 85% ratio (Crate Motor)
7M750	Alternator belt, Chevy engine. Using the standard drive ratio
7M690	Power steering belt, Ford engine. Using the standard drive ratio
7M710	Alternator belt, Ford engine. Using the standard drive ratio

**7MM POLY V-BELTS**

The 7MM Poly V-Belts are readily available from BLP Products or most industrial bearing supply houses. The products or most industrial bearing supply houses. The part number is the same whether the belt is a Goodyear® or a Gates®

Size	Effective Length	Size	Effective Length
7M500	19.69"	7M710	27.95"
7M515	20.28"	7M730	28.74"
7M530	20.87"	7M750	29.23"
7M545	21.46"	7M800	31.50"
7M560	22.05"	7M800	31.50"
7M580	22.83"	7M825	32.48"
7M600	23.62"	7M850	33.46"
7M615	24.21"	7M875	34.45"
7M630	24.80"	7M900	35.43"
7M650	25.59"	7M925	36.42"
7M670	26.38"	7M950	37.40"
7M690	27.17"	7M975	38.39"

*These belt lengths should handle any normal racing application but longer lengths are available if needed.*

**COMPLETE DRIVE KITS**

The following kits include all the parts necessary to install the BLP Poly-V system on your engine.

- Drive mandrel
- Poly-V belts  
*(does not include dry sump belt)*
- Water pump pulley
- Hex head hat washer
- Crankshaft pulley
- All bolts and spacers
- Alternator pulley
- Dry sump drive gear  
*(16-17 or 18 tooth)*
- Power steering pulley
- Power steering drive pulley



Part Number	Application
9090K-SBC	S/B Chevy SB2 and 18 degree engines
9090K-SBCC	602-604 Crate WP & PS only
9090K-SBC-LLM	S/B Chevy Limited Late Model with wet sump engines
9090K-SBC-SLM	S/B Chevy Super Late Model with dry sump engines
9090K-SBFC	SB F Crate WP & PS only

**Individual Component Parts**

Part Number	Application
7140	S/B and B/B dual groove crankshaft pulley
7141	S/B balancer hat washer
71411	S/B balancer hat washer, crank trigger
7153	B/B balancer hat washer
71531	B/B balancer hat washer, crank trigger
7143-3.000	Drive mandrel with 3.000" spacing from balancer
7143-3.500	Drive mandrel with 3.500" spacing from balancer
7143-4.000	Drive mandrel with 4.000" spacing from balancer
70062	Hex head hat washer for mandrel
7045-2.500	S/B balancer bolt
7045-1.500	Drive mandrel bolt

## BLP ENGINE HARD PARTS

### BLP BILLET TIMING COVERS

Some of the major problems in building Chevy engines are controlling cam walk, oil leaks and being able to easily adjust and change the camshaft. Even when cam buttons are installed the cam causes the stock cover to flex therefore the problems still exists. When the water pump is used for a thrust stop the slightest mistake while installing the water pump can cause serious engine failures by forcing the cam gear against the block. Erratic timing control, worn distributor gears and broken timing chains can be caused from cam walk.

#### Features:

- **Two and three piece construction**
- **Replaceable roller thrust button that is easily adjusted to set end play**
- **Access hole in cover to check cam end play with dial indicator**
- **Any water pump can be used without spacing of pump and pulleys**
- **No machining necessary**
- **Comes with all hardware and gaskets**
- **Timing Tab included**

### CHEVY 2 PIECE CAM COVERS

BLP's two piece cam cover is CNC machined from 6061-billet aluminum. The inner ring bolts directly to the block and seals the oil pan. The outer cover can be removed and the cam changed without disturbing the oil pan seal. The timing cover seal is installed from the backside of the front cover so there is no way it can come out. The cover is available for the small block V/8, 90° V/6 and big block engines.



Part Number	Application
6000	Complete Kit S/B - V/8 and 90° V/6.
6020	Complete Kit B/B

### B/B GEN VI 2 PIECE CAM COVER

2-piece billet timing covers for the B/B Chevy Gen VI engines. The timing cover will clear a stock water pump. Kit comes with an adjustable timing pointer that will work with either a 7" or 8" balancer



Part No.	Application
60202	Complete Kit

### S/B CHEVY USING A B/B CRANKSHAFT SNOOT

A lot of engine builders are now using S/B Chevy crankshafts with a B/B crankshaft snout. This adds strength to the front of the crankshaft especially in racing applications that require a lot of accessories driven off the front of the crankshaft.

Part Number	Application
60002	Complete Kit S/B - V/8 and V/6



### CHEVY 3 PIECE CAM COVERS

BLP's three piece cam cover is CNC machined from 6061 billet aluminum. The inner ring bolts directly to the block and seals the oil pan. The outer cover is a two piece design. The bottom half contains the cam cover seal. The top half can be removed to service the camshaft without having to remove the balancer. The kits are available for S/B, V/8, V/6 and B/B Chevy engines.



Part Number	Application
60004	S/B - V/8 and V/6.
60201	B/B

## BLP ENGINE HARD PARTS

### CAM COVER SERVICE PARTS

Part No.	Application
6008	Block ring S/B
6007	Outer cover S/B, 1 piece, fits standard crank snout
60071	Outer cover S/B, 1 piece, fits B/B crank snout
60072	Outer cover S/B top section for 3-piece kits
60073	Outer cover S/B bottom section for 3-piece kits
6025	Block ring B/B except Gen VI
6024	Outer cover, B/B, 1 piece
60241	Outer cover B/B top section for 3-piece kits
60242	Outer cover B/B bottom section for 3-piece kits
60252	Block ring for B/B Gen VI
60202-1	Outer cover B/B Gen VI
6001	Roller thrust button S/B and B/B
6003	Shim kit for setting cam end play, Contains: (1) .001" (2) .010" and (1) .020" shims 6005-S/B Cam cover seal, S/B 6005-B/B Cam cover seal, B/B

### HARDWARE KITS

Contains all bolts and shims, (does not contain thrust button or cam retainer plate)

Part Number	Application
6014-S/B	Small block
6014-B/B	Big Block
6014-G6	B/B Gen VI

### TIMING POINTERS

Timing pointers are stainless steel and slotted for fine TDC adjustment.



Part Number	Application
60181-7	S/B Chevy 7.375"
60181-8	S/B Chevy 8.000"
60191-7	B/B Chevy 7.375"
60191-8	B/B Chevy 8.000"
60191-G6	B/B Chevy Gen VI

### CAMSHAFT LOCATION ADJUSTING SHIM

This stainless steel shim is designed to fit on the nose of the camshaft between the camshaft and the camshaft gear. This enables the engine builder to adjust the camshaft in relation to the lifter bores.

Part Number	Application
6078-010	.010" thickness
6078-015	.015" thickness
6078-020	.020" thickness

### CAM GEAR RETAINER

Stainless steel .060" thick cam retainer plate. This retainer plate is designed to capture and hold pressure on the camshaft dowel pin as well as retain the degree bushing. If the dowel pin should break the retainer plate will not let the broken pin fall into the engine. The cam retainer bolts are high quality TORX PLUS bolts.



Part Number	Application
6004	Cam Gear Retainer Chevy V8 and V6 engines Kit w/TORX bolt
60041	Retainer plate only

### CAM BUTTON

Roller type camshaft thrust button for BLP and stock cam covers. Total length is .675".



Part no.	Application
6001	All BLP front cover kits S/B and B/B

### PISTON OILING SYSTEM COMPONENTS

This engine block modification is a highly proven method of supplying pressurized lubrication to the wrist pin area of racing pistons and also provides additional cooling to the pistons. As piston cooling is now a recognized necessity for racing engines, our system offers the most efficient method available. Other markets realizing the benefits of piston cooling and wrist pin lubricating include supercharged, turbocharged and nitrous oxide assisted engines.

Part Number	Application
402-006	#28 Drill Bit, 6" length
402-012	#28 Drill Bit, 12" length
402-020	8-32 Plug Tap
402-021	8-32 Combination Drill/Tap Drap
402-100	Drill bushing for PDO fixtures
401-126	1.000 Oiler system jet
401-226	1.250" Oiler system jet
401-326	1.625" Oiler system jet

**PORT FITTINGS**

BLP fittings are designed and manufactured in our Orlando FL facility. Made to install into a fuel pump or dry sump pump and are sealed using an o-ring.



Part Number.	37° Outlet end	Port End
7322	-8AN	-6AN
7323	-8AN	-8AN
7324	-10AN	-8AN
7325	-12AN	-8AN
7326	-8AN	-10AN
7327	-10AN	-10AN
7330	-12AN	-12AN
7331	-16AN	-12AN
43154	-8AN Port plug	
43153	-8AN port plug w/ 1/8" female pipe	



**OIL INLET FILLING**

Part Number.	Fitting Size	Pipe Thread	Overall length	Material
9007-12A	12AN	1/2	3.150"	Aluminum
9008-10S	10AN	3/8	2.190"	Steel
9009-10S	10AN	3/8	4.380"	Steel
9009-12S	12AN	3/8	4.420"	Steel
9010-10A	10AN	1/2	4.380"	Aluminum
9010-12A	12AN	1/2	4.420"	Aluminum
9011-10S	10AN	1/2	4.380"	Steel
9011-12S	12AN	1/2	4.420"	Steel

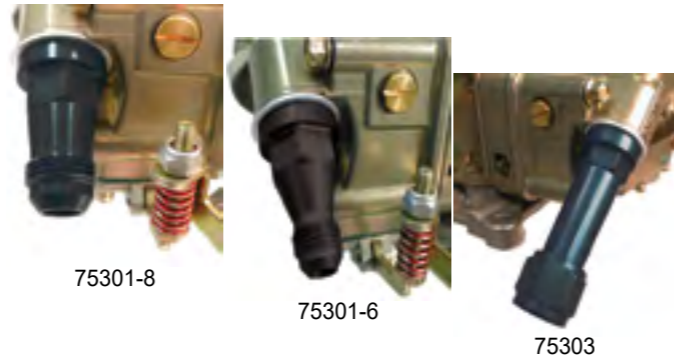


**FUEL SHUT OFF VALVE FITTING**

BLP Shut off valve fitting is designed to install a BLP 7340 & 7341 Fuel shut off into the outlet side of a BLP belt driven fuel pump. This bulkhead design allows for adjustment position of the valve.

Part Number	37° Outlet	Port End
7329	-8AN	-8AN

**BLP FITTINGS/TOOLS**



**HOLLEY® FUEL INLET FITTINGS**

These fittings allow you to use a -8AN fuel line directly into a classic Holley® fuel bowl. Utilizing an 11/16" hex for easy installation and removal.

Part Number	Description
7319	-8AN female to 3/8 n.p.t.
7320	-8AN female to 3/8 n.p.t. w/ 1/8" gage port.
7321	-8AN female to -8AN male w/ gage port.
75301B-6	-6AN male fitting w/ washer 7/8-20 Black
75301B-8	-8AN male fitting w/ washer 7/8-20 Black.
75303	-8AN AN female swivel for Classic fuel bowls 7/8-20
75304	-8AN female swivel for Ultra® HP and Braswell fuel bowls.
75305	-8AN female swivel for Demon® fuel bowls
75302	7/8 Aluminum seal washer.



**HOLLEY® FUEL BOWL INLET PLUGS**

Part Number	Description
43151	7/8-20 Classic fuel bowl plug.
43152	7/8-20 with 1/8 female pipe thread
43153	Ultra®HP and Braswell Bowls w/ 1/8" female pipe
43154	Ultra® HP and Braswell Bowls -8AN

**BLP FITTINGS/TOOLS**

**SPECIALIZED FITTINGS**

Part Number	Description
7319	Male 3/8NPT -8AN Female allows to attach 7491 regulator to BLP 75111 Log
7320	Same as above with 1/8 female NPT for pressure gage.
7321	-8 male to -8 female union w/ 1/8 NPT provision.

**PUMP NOZZLE SCREW REPAIR KIT**

BLP has developed an easy way to repair main bodies that have the pump nozzle thread stripped. Simply ream the main body and installed the threaded sleeve with loctite. Spot face the top and you are ready to go. **Visit our web site help center for full written and video instructional material.**



Part Number	Description
7882	Repair sleeve kit
7882-1	Reamer
7882-2	Sleeve replacement

**VERTICAL MILL BOOSTER TOOL**

BLP 78751 Booster installation system was designed to provide custom carburetor builders with the tools to properly install boosters in most all Holley® and BLP Billet main sections.



Part Number	Description
78751	BLP Mill Mount booster installation system.
78751-1	BLP Booster installation Main Bar.
78751-2	BLP Booster installation tool item (Anvil)
78751-2BX4	BLP Booster installation tool item (Anvil) for BX4 applications
78751-3	Booster Installation Upright
78751-4	Booster Installation Baseplate
78751-5	Booster spin rivet rod.
78751-5BX4	Booster spin rivet rod. For BX4 Billet bodies

**BOOSTER LEVELING TOOL**

BLP simplifies booster installation, along with our booster installation system we offer a leveling system to ensure your booster installation is handled properly.



Part Number	Description
78751-6	Std Holley® down leg boosters
78751-7	B Series Braswell boosters
78751-8	Holley® annular boosters
78751-9	Replacement Circular level for Leveling tools

**MANUAL BOOSTER INSTALLATION SYSTEM**

This vise held system is designed to install boosters in Holley® 4150-2300 series carburetors. Optional annular booster adapter available.



Part Number	Description
7875	Booster installation tool
7876	Annular booster adapter.

**MAIN BODY THREAD REPAIR**



Part Number	Description
7878K-12/24	Heli-Coil repair kit for fuel bowl threads
7878-12/24	Heli-Coil inserts 12-24
7878K-8/32	Heli Coil Repair kit
7881-10/32	10-32 Air corrector tap
7878-5/16	Heli-Coil inserts 5/16
7878-7/16	Heli-Coil inserts 7/16
7878-10/32	Heli-Coil inserts 10-32

## BLP FITTINGS/TOOLS

### JET TOOLS AND COMPONENTS

Part Number	Description
7881-4/40	4/40 Tap
7881-8/32	8/32 Tap
7881-10/32	10/32 Tap
7881-12/24	12/24 Tap
7881-1/4	1/4 Tap
7881-350	350-32 Tap
7881-5/16	5/16 Tap

### PIN GAUGE SETS

Part Number	Description
7880-1	.011"-.060"
7880-2	.061"-.250"

### BLP CARBURETOR INSPECTION GAUGE KITS

Part Number	Carb Checked	Cfm Listed
7859	0-7448	350
7860	0-4412	500
7861	0-80507	390
7862	0-4776	600
7862HP	0-80540-1	600
7863	0-4779	750
7863HP	0-80528	750
7864	0-4777	650
7864HP	0-80541	650
7866	0-3310	750



The advertisement features a large image of a BLP carburetor at the top. Below it, the text 'BLP XTREME PERFORMANCE' is prominently displayed. Three circular insets show different parts: 'CARBURETORS', 'FUEL SYSTEMS', and 'BULK COMPONENTS'. At the bottom, contact information for BLP Racing Products, LLC is provided, along with the slogan 'Fueling your passion for Xtreme Performance'.

# BLP

XTREME PERFORMANCE



CARBURETORS



FUEL SYSTEMS



BULK COMPONENTS

BLP Racing Products, LLC. ■ 1015 West Church Street ■ Orlando FL, 32805  
 407-422-0394 800-624-1358

Fueling your passion for Xtreme Performance



# BLP

## XTREME PERFORMANCE

WWW.BLP.COM

1-800-624-1358

BLP Racing Products, LLC.  
1015 W. Church St.  
Orlando, FL 32805  
407-422-0394  
800-624-1358  
407-422-2741 Fax  
sales@blp.com  
WWW.BLP.COM

www.BLP.com  
800-624-1358

